

**South Cambridgeshire Local Plan
Composite Main Modifications - 2018**



**Main Modification SC303i:
Delete Local Green Space
Site NH/12-035d**

NH/12-035g

NH/12-027

NH/12-033

**Main Modification SC303b:
Delete Local Green Space
Site NH/12-026 and replace
with Protected Village Amenity
Area**

Cambourne

UPPER CAMBOURNE

Mordfield Wood

**Main Modification SC303a:
Delete Local Green Space Site
NH/12-025 and replace with
Protected Village Amenity Area**

**Main Modification SC303g:
Delete Local Green Space
Site NH/12-035a**

**Main Modification SC303h:
Delete Local Green Space
Site NH/12-035b**

GREAT
CAMBOURNE

**South Cambridgeshire
Proposed Submission
Policies Map: July 2013
Inset No. 14 Cambourne
Map 3 of 7
Scale 1:5000**

Reproduced from the Ordnance Survey Mapping with the permission of the Controller of Her Majesty's Stationery Office © Crown Copyright. Unauthorised reproduction infringes Crown Copyright and may lead to prosecution or civil proceedings.

NO FURTHER COPIES MAY BE MADE. SDC Licence 100022500 (2018)

**South Cambridgeshire Local Plan
Composite Main Modifications - 2018**



**Main Modification SC303j:
Delete Local Green Space
Site NH/12-035f**

**Main Modification SC303c:
Delete Local Green Space
Site NH/12-028 and replace
with Protected Village Amenity
Area**

**Main Modification SC303f:
Delete Local Green Space
Site NH/12-034**

**Main Modification SC303d:
Delete Local Green Space
Site NH/12-029 and replace
with Protected Village Amenity
Area**

**Main Modification SC303g:
Delete Local Green Space
Site NH/12-035a**

**South Cambridgeshire
Proposed Submission
Policies Map: July 2013
Inset No. 14 Cambourne
Map 4 of 7
Scale 1:5000**

Reproduced from the Ordnance Survey Mapping with the permission of the Controller of Her Majesty's Stationery Office © Crown Copyright. Unauthorised reproduction infringes Crown Copyright and may lead to prosecution or civil proceedings.
NO FURTHER COPIES MAY BE MADE. SCDC Licence 100022500 (2018)

**South Cambridgeshire Local Plan
Composite Main Modifications - 2018**

**Main Modification SC303i:
Delete Local Green Space
Site NH/12-035d**

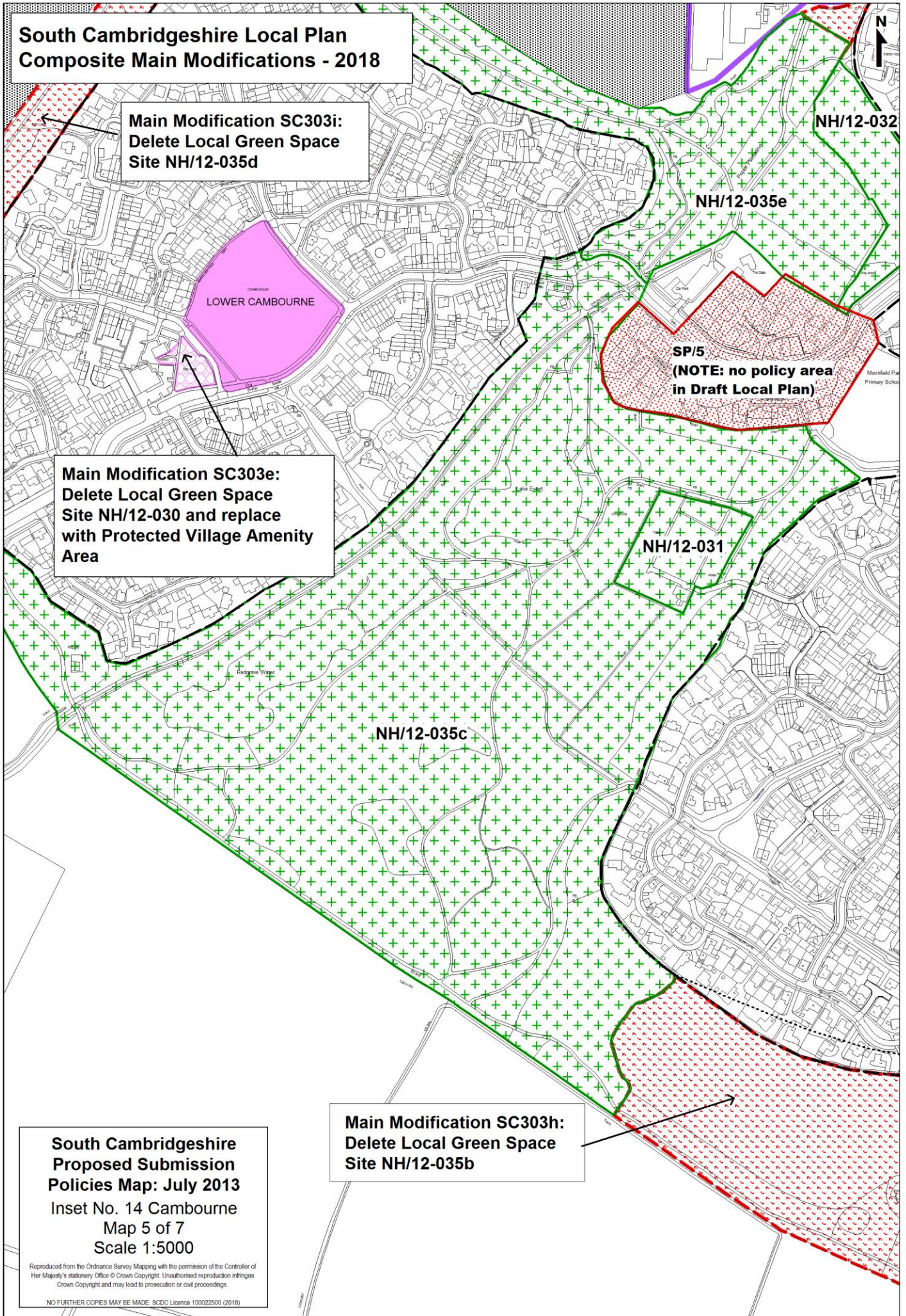
**Main Modification SC303e:
Delete Local Green Space
Site NH/12-030 and replace
with Protected Village Amenity
Area**

**Main Modification SC303h:
Delete Local Green Space
Site NH/12-035b**

**South Cambridgeshire
Proposed Submission
Policies Map: July 2013**
Inset No. 14 Cambourne
Map 5 of 7
Scale 1:5000

Reproduced from the Ordnance Survey Mapping with the permission of the Controller of Her Majesty's Stationery Office © Crown Copyright. Unauthorised reproduction infringes Crown Copyright and may lead to prosecution or civil proceedings.

NO FURTHER COPIES MAY BE MADE. SDCDC Licence 100022500 (2018)



**South Cambridgeshire Local Plan
Composite Main Modifications - 2018**

**Main Modification SC303a:
Delete Local Green Space
Site NH/12-025 and replace
with Protected Village Amenity
Area**

**Main Modification SC303g:
Delete Local Green Space
Site NH/12-035a**

**Main Modification SC303h:
Delete Local Green Space
Site NH/12-035b**

**South Cambridgeshire
Proposed Submission
Policies Map: July 2013**
Inset No. 14 Cambourne
Map 6 of 7
Scale 1:5000

Reproduced from the Ordnance Survey Mapping with the permission of the Controller of Her Majesty's Stationery Office © Crown Copyright. Unauthorised reproduction infringes Crown Copyright and may lead to prosecution or civil proceedings.

NO FURTHER COPIES MAY BE MADE. SDCD Licence 100022500 (2018)

**South Cambridgeshire Local Plan
Composite Main Modifications - 2018**

**Main Modification SC303d:
Delete Local Green Space
Site NH/12-029 and replace
with Protected Village Amenity
Area**

**Main Modification SC303f:
Delete Local Green Space
Site NH/12-034**

**Main Modification SC303g:
Delete Local Green Space
Site NH/12-035a**

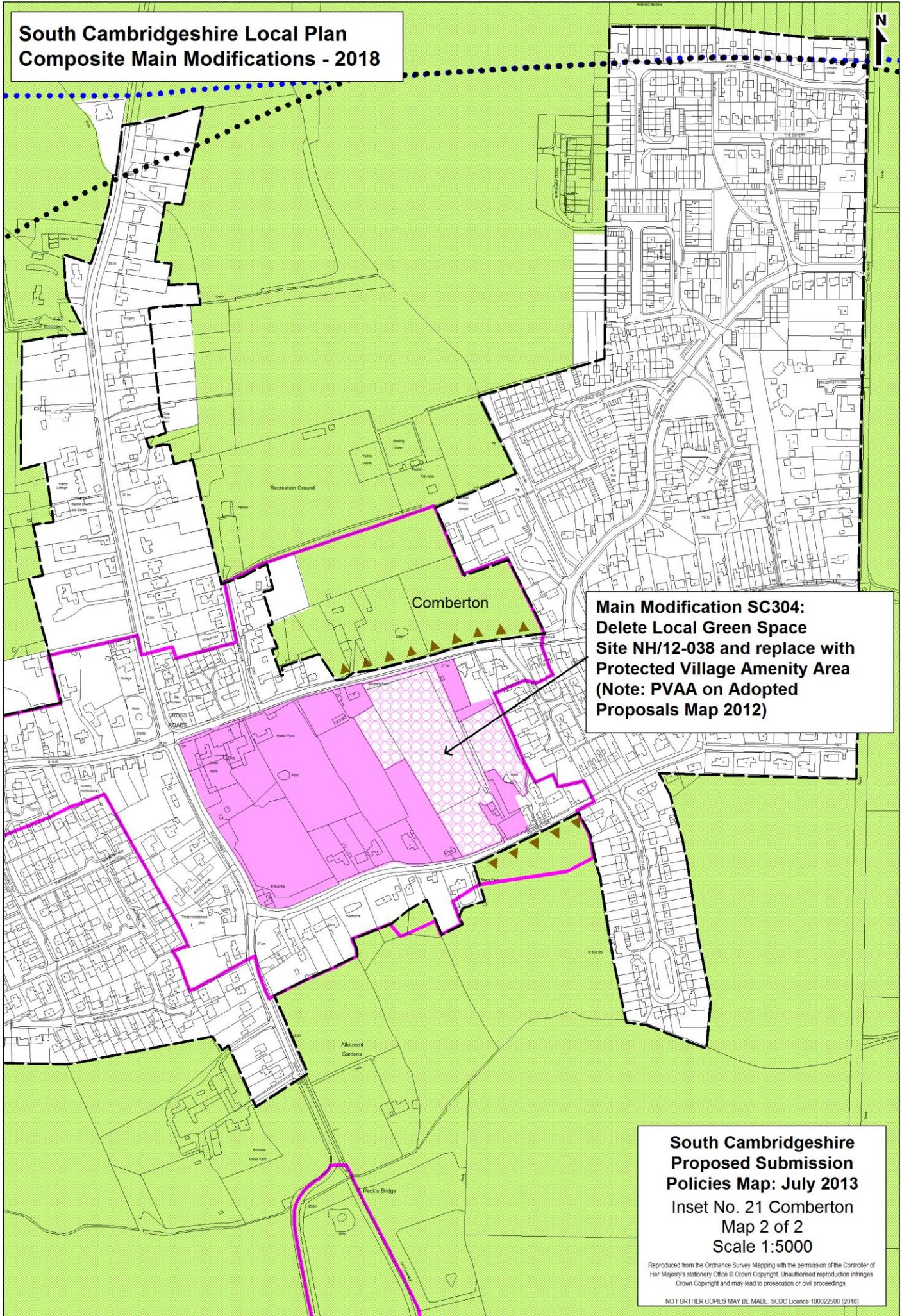
**Main Modification SC303h:
Delete Local Green Space
Site NH/12-035b**

**South Cambridgeshire
Proposed Submission
Policies Map: July 2013
Inset No. 14 Cambourne
Map 7 of 7
Scale 1:5000**

Reproduced from the Ordnance Survey Mapping with the permission of the Controller of Her Majesty's Stationery Office © Crown Copyright. Unauthorised reproduction infringes Crown Copyright and may lead to prosecution or civil proceedings.

NO FURTHER COPIES MAY BE MADE. SCDC Licence 100022500 (2018)

**South Cambridgeshire Local Plan
Composite Main Modifications - 2018**



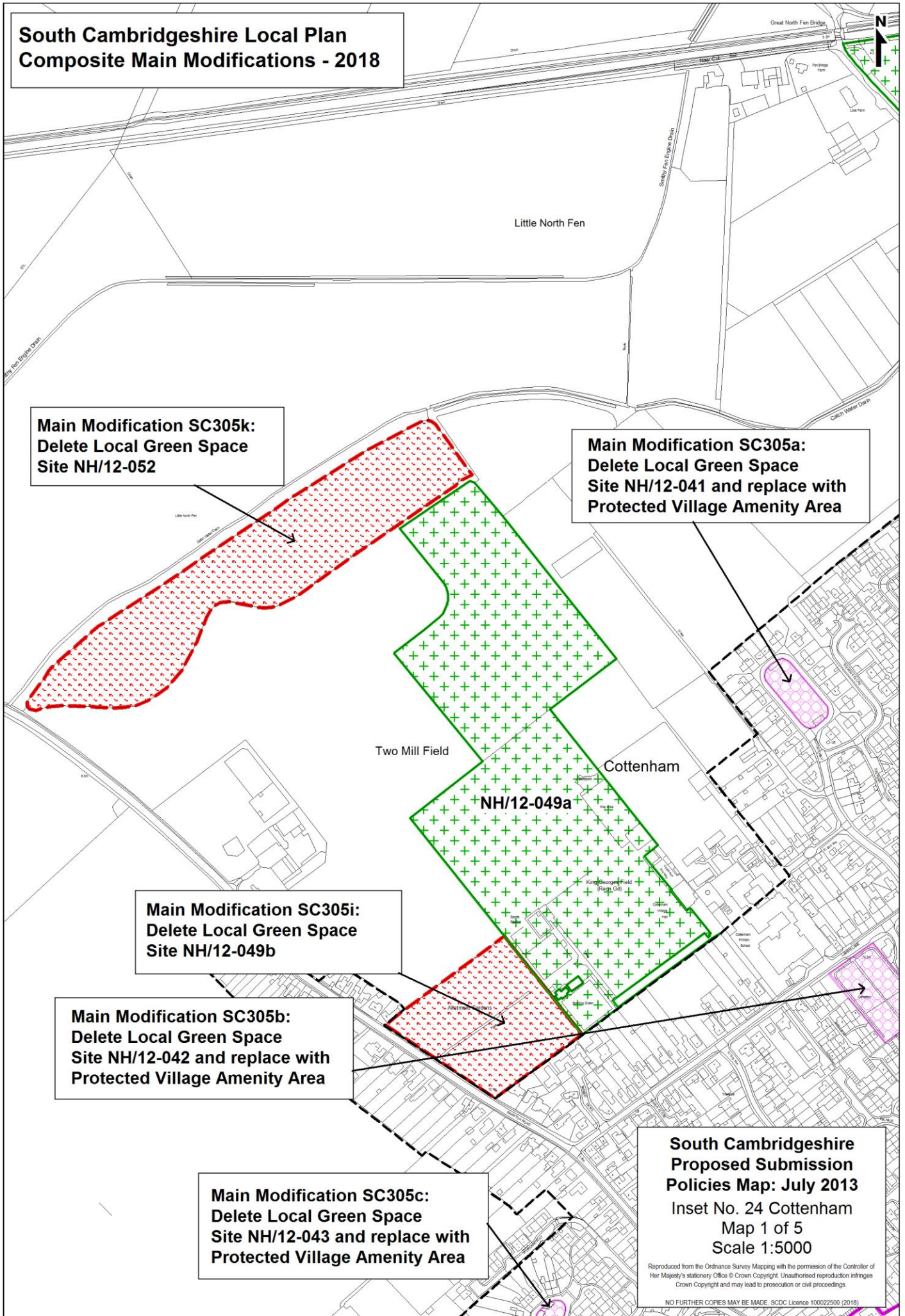
**Main Modification SC304:
Delete Local Green Space
Site NH/12-038 and replace with
Protected Village Amenity Area
(Note: PVAA on Adopted
Proposals Map 2012)**

**South Cambridgeshire
Proposed Submission
Policies Map: July 2013**
Inset No. 21 Comberton
Map 2 of 2
Scale 1:5000

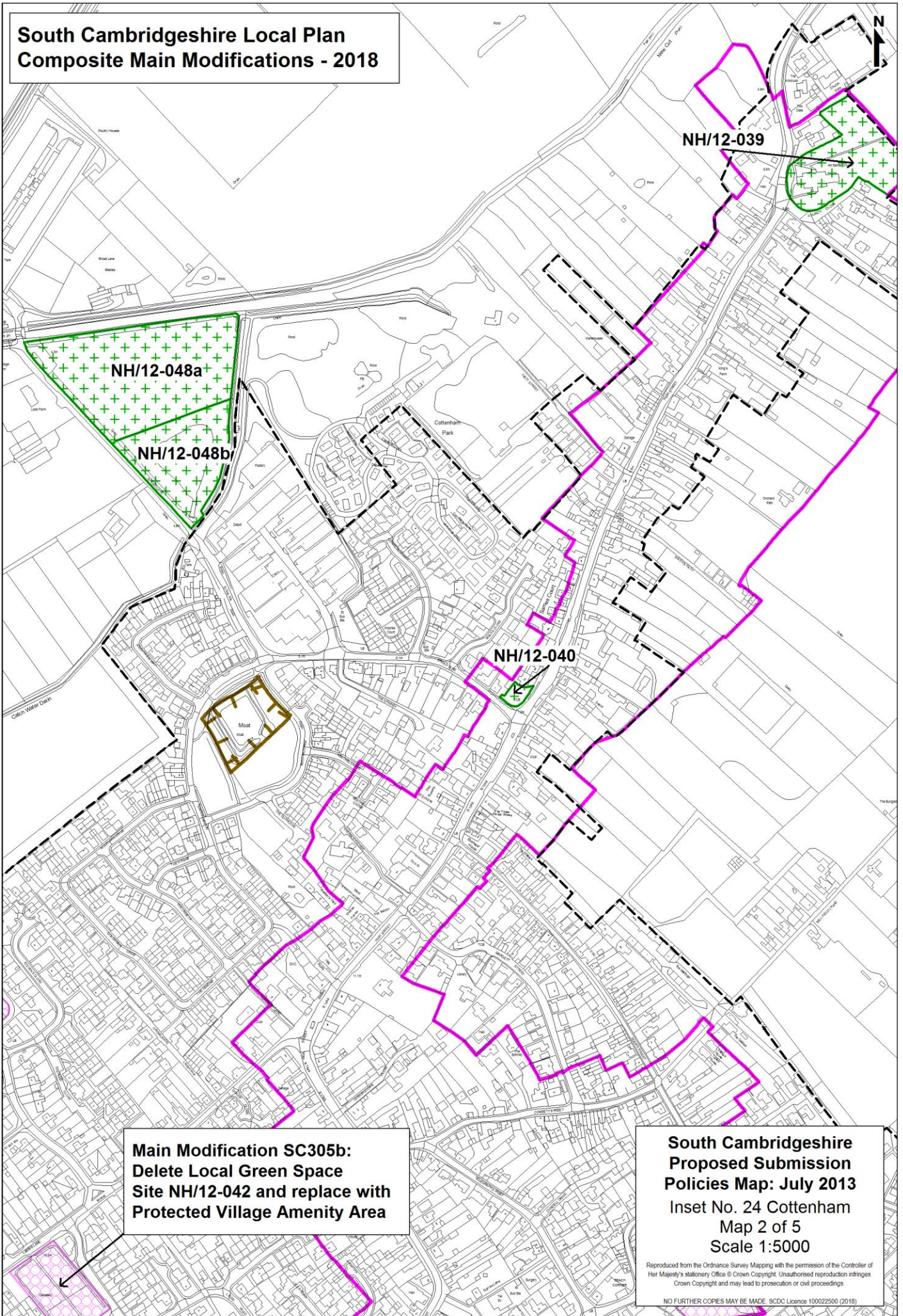
Reproduced from the Ordnance Survey Mapping with the permission of the Controller of Her Majesty's Stationery Office © Crown Copyright. Unauthorised reproduction infringes Crown Copyright and may lead to prosecution or civil proceedings.

NO FURTHER COPIES MAY BE MADE. SDCD Licence 100022500 (2018)

**South Cambridgeshire Local Plan
Composite Main Modifications - 2018**



**South Cambridgeshire Local Plan
Composite Main Modifications - 2018**



**Main Modification SC305b:
Delete Local Green Space
Site NH/12-042 and replace with
Protected Village Amenity Area**

**South Cambridgeshire
Proposed Submission
Policies Map: July 2013
Inset No. 24 Cottenham
Map 2 of 5
Scale 1:5000**

Reproduced from the Ordnance Survey Mapping with the permission of the Controller of Her Majesty's Stationery Office © Crown Copyright. Unauthorised reproduction infringes Crown Copyright and may lead to prosecution or civil proceedings.

NO FURTHER COPIES MAY BE MADE. SDCDC Licence 100022500 (2018)

**South Cambridgeshire Local Plan
Composite Main Modifications - 2018**



**Main Modification SC305j:
Delete Local Green Space
Site NH/12-051**

E/15 (2b)

NH/12-039

**South Cambridgeshire
Proposed Submission
Policies Map: July 2013**
Inset No. 24 Cottenham
Map 3 of 5
Scale 1:5000

Reproduced from the Ordnance Survey Mapping with the permission of the Controller of Her Majesty's Stationery Office © Crown Copyright. Unauthorised reproduction infringes Crown Copyright and may lead to prosecution or civil proceedings.

NO FURTHER COPIES MAY BE MADE. SDCD Licence 100022500 (2018)

South Cambridgeshire Local Plan Composite Main Modifications - 2018



NH/12-049a

Main Modification SC305i:
Delete Local Green Space
Site NH/12-049b

Main Modification SC305b:
Delete Local Green Space
Site NH/12-042 and replace with
Protected Village Amenity Area

NOTE:
Previously
a PVAA

NH/12-053

Main Modification SC305c:
Delete Local Green Space
Site NH/12-043 and replace with
Protected Village Amenity Area

**South Cambridgeshire
Proposed Submission
Policies Map: July 2013**
Inset No. 24 Cottenham
Map 4 of 5
Scale 1:5000

Reproduced from the Ordnance Survey Mapping with the permission of the Controller of Her Majesty's Stationery Office © Crown Copyright. Unauthorised reproduction infringes Crown Copyright and may lead to prosecution or civil proceedings.

NO FURTHER COPIES MAY BE MADE. SCDC Licence 100022500 (2018)