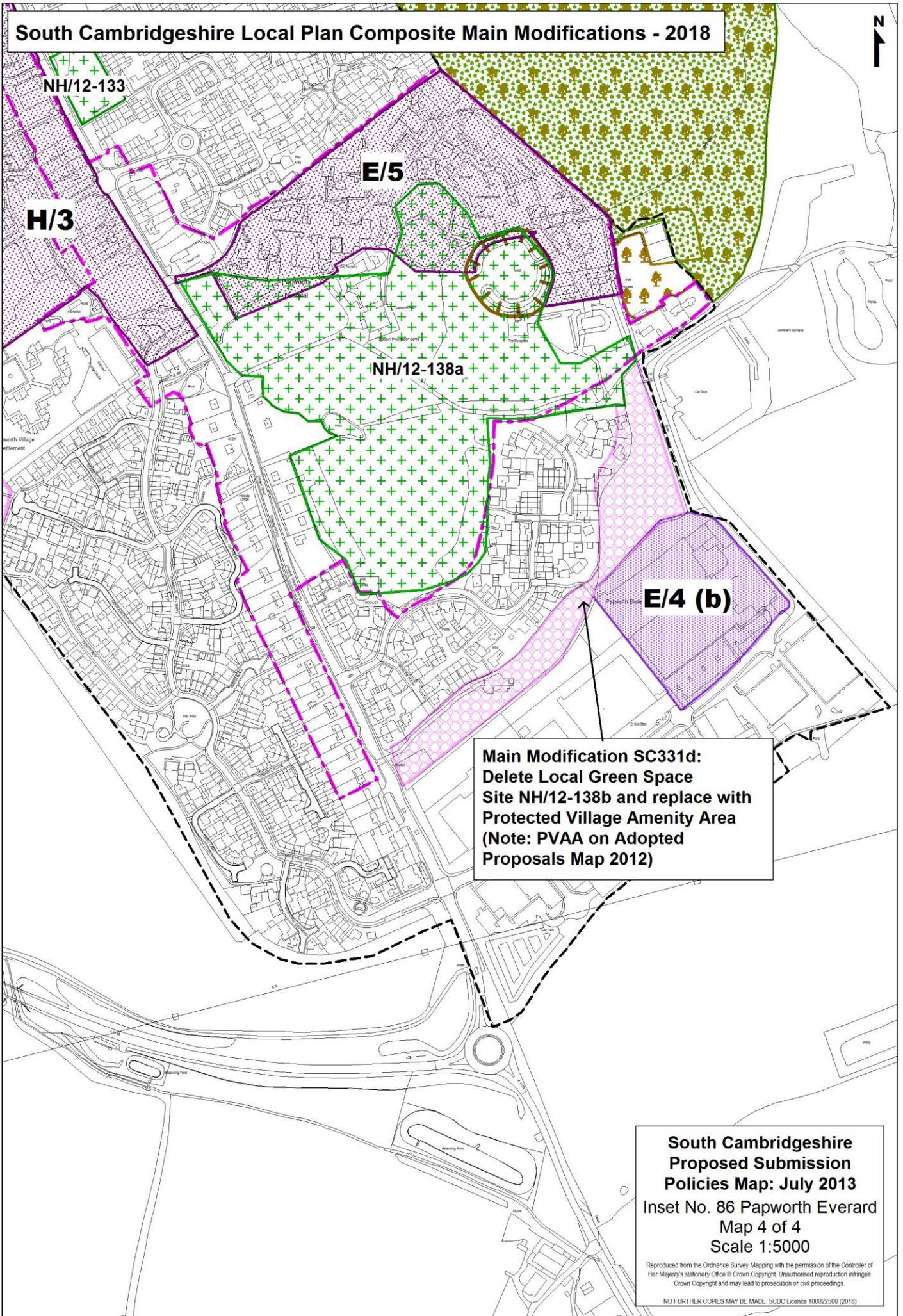


South Cambridgeshire Local Plan Composite Main Modifications - 2018



**South Cambridgeshire Local Plan
Composite Main Modifications - 2018**

**South Cambridgeshire
Proposed Submission
Policies Map: July 2013**
Inset No. 89 Sawston
Map 1 of 6
Scale 1:5000

Reproduced from the Ordnance Survey Mapping with the permission of the Controller of Her Majesty's Stationery Office © Crown Copyright. Unauthorised reproduction infringes Crown Copyright and may lead to prosecution or civil proceedings.

NO FURTHER COPIES MAY BE MADE. SDCDC Licence 100022500 (2018)

**NOTE:
Previously
a PVAA**

NH/12-145

**Main Modification SC332b:
Delete Local Green Space
Site NH/12-144 and replace with
Protected Village Amenity Area**

NH/12-142

**Main Modification SC332a:
Delete Local Green Space
Site NH/12-140 and replace with
Protected Village Amenity Area**

**South Cambridgeshire Local Plan
Composite Main Modifications - 2018**



H/1 (a)

**Main Modification SC332d:
Delete Local Green Space
Site NH/12-148 and replace with
Protected Village Amenity Area**

**NOTE:
Previously
a PVAA**

NH/12-146

**Main Modification SC332b:
Delete Local Green Space
Site NH/12-144 and replace with
Protected Village Amenity Area**

**Main Modification SC332a:
Delete Local Green Space
Site NH/12-140 and replace with
Protected Village Amenity Area**

**South Cambridgeshire
Proposed Submission
Policies Map: July 2013**
Inset No. 89 Sawston
Map 2 of 6
Scale 1:5000

Reproduced from the Ordnance Survey Mapping with the permission of the Controller of Her Majesty's Stationery Office © Crown Copyright. Unauthorised reproduction infringes Crown Copyright and may lead to prosecution or civil proceedings.

NO FURTHER COPIES MAY BE MADE. SDCD Licence 100022500 (2018)

**South Cambridgeshire Local Plan
Composite Main Modifications - 2018**



NH/12-142

**Main Modification SC332a:
Delete Local Green Space
Site NH/12-140 and replace with
Protected Village Amenity Area**

**NOTE:
Previously
a PVAA**

**NOTE:
Previously
a PVAA**

**Main Modification SC332f:
Delete Local Green Space
Site NH/12-143 (land within
nursery)**

NH/12-143

**Main Modification SC332c:
Delete Local Green Space
Site NH/12-147b and replace with
Protected Village Amenity Area**

NH/12-147a

**NOTE:
Previously
a PVAA**

**Main Modification SC332e:
Delete Local Green Space
Site NH/12-141**

E/3

**South Cambridgeshire
Proposed Submission
Policies Map: July 2013**
Inset No. 89 Sawston
Map 4 of 6
Scale 1:5000
Reproduced from the Ordnance Survey Mapping with the permission of the Controller of Her Majesty's Stationery Office © Crown Copyright. Unauthorised reproduction infringes Crown Copyright and may lead to prosecution or civil proceedings.
NO FURTHER COPIES MAY BE MADE. SCDC Licence 100022500 (2018)

**South Cambridgeshire Local Plan
Composite Main Modifications - 2018**



**Main Modification SC332a:
Delete Local Green Space
Site NH/12-140 and replace with
Protected Village Amenity Area**

**Main Modification SC332f:
Delete Local Green Space
Site NH/12-143 (to exclude
land within the nursery)**

**NOTE:
Previously
a PVAA**

NH/12-143

**Main Modification SC332c:
Delete Local Green Space
Site NH/12-147b and replace with
Protected Village Amenity Area**

NH/12-147a

**NOTE:
Previously
a PVAA**

**Main Modification SC332e:
Delete Local Green Space
Site NH/12-141**

E/3 (b)

**South Cambridgeshire
Proposed Submission
Policies Map: July 2013**
Inset No. 89 Sawston
Map 5 of 6
Scale 1:5000

Reproduced from the Ordnance Survey Mapping with the permission of the Controller of Her Majesty's Stationery Office © Crown Copyright. Unauthorised reproduction infringes Crown Copyright and may lead to prosecution or civil proceedings.
NO FURTHER COPIES MAY BE MADE. SCDC Licence 100022500 (2018)

South Cambridgeshire Local Plan Composite Main Modifications - 2018



NH/12-143

NOTE:
Previously
a PVAA

NH/12-147a

Main Modification SC332c:
Delete Local Green Space
Site NH/12-147b and replace with
Protected Village Amenity Area

NOTE:
Previously
a PVAA

Main Modification SC332e:
Delete Local Green Space
Site NH/12-141

E/3 (b)

Main Modification SC332g:
Amend Policies Map to include
land within the parish of Pampisford
west of London Road on the southern
end of Sawston within the development
framework of Sawston. Remove 'area
covered by another map' annotation
from this area. Add an additional map
6 to inset map 89 to cover this area.

E/3 (b)

**South Cambridgeshire
Proposed Submission
Policies Map: July 2013**
Inset No. 89 Sawston
Map 6 of 6
Scale 1:5000

Reproduced from the Ordnance Survey Mapping with the permission of the Controller of Her Majesty's Stationery Office © Crown Copyright. Unauthorised reproduction infringes Crown Copyright and may lead to prosecution or civil proceedings.

NO FURTHER COPIES MAY BE MADE. SCDC Licence 100022500 (2018)

**South Cambridgeshire
Proposed Submission
Policies Map: July 2013**
Inset No. 95 Steeple Morden
Map 1 of 3
Scale 1:5000

Reproduced from the Ordnance Survey Mapping with the permission of the Controller of Her Majesty's Stationery Office © Crown Copyright. Unauthorised reproduction infringes Crown Copyright and may lead to prosecution or civil proceedings.

NO FURTHER COPIES MAY BE MADE. SDCDC Licence 100022500 (2018)

**South Cambridgeshire Local Plan
Composite Main Modifications -
2018**



**Main Modification SC333c:
Delete Local Green Space
Site NH/12-153**

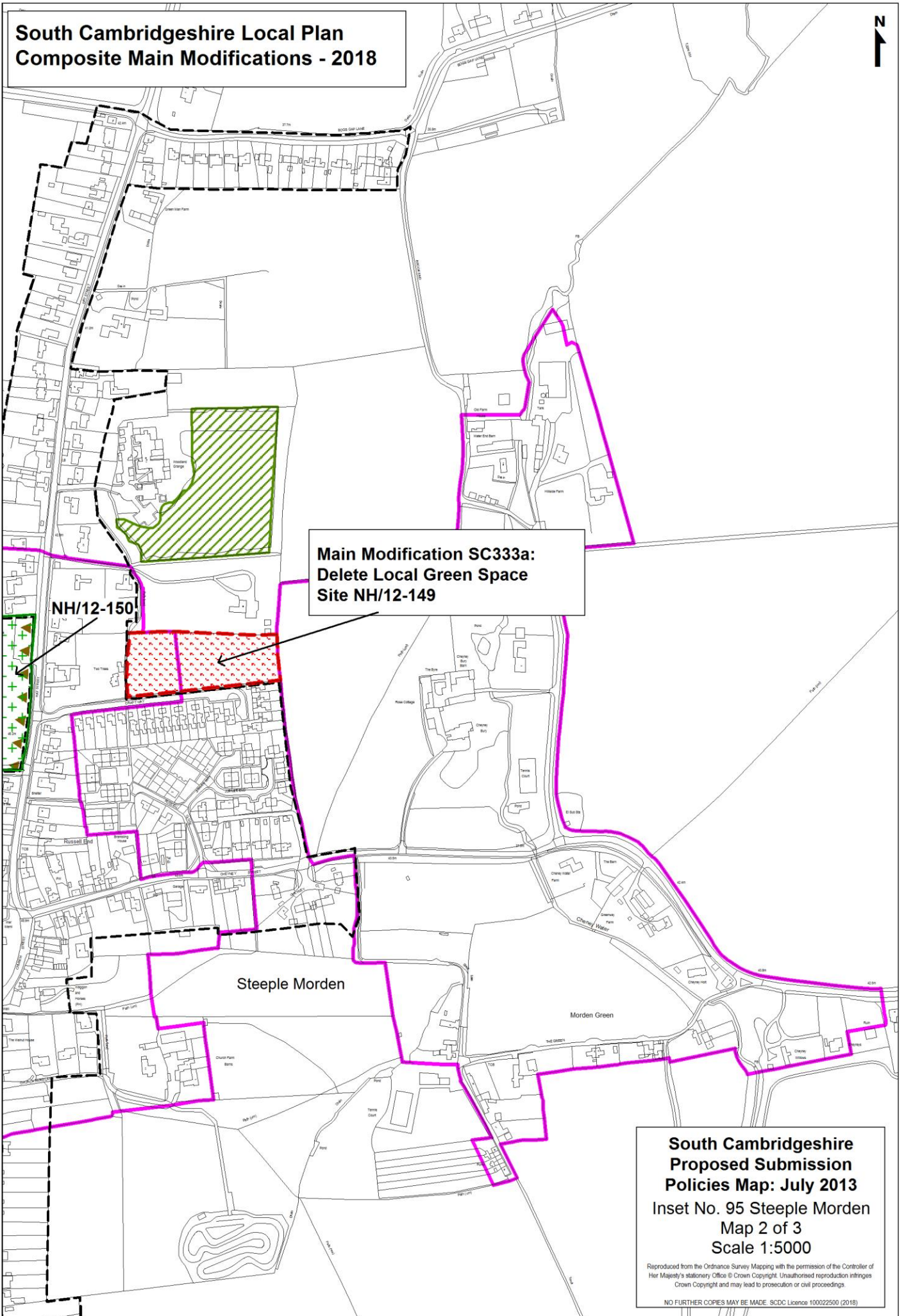
**Main Modification SC333b:
Delete Local Green Space
Site NH/12-152**

**Main Modification SC333a:
Delete Local Green Space
Site NH/12-149**

NH/12-151

NH/12-150

**South Cambridgeshire Local Plan
Composite Main Modifications - 2018**



**Main Modification SC333a:
Delete Local Green Space
Site NH/12-149**

NH/12-150

Steeple Morden

Morden Green

**South Cambridgeshire
Proposed Submission
Policies Map: July 2013**
Inset No. 95 Steeple Morden
Map 2 of 3
Scale 1:5000

Reproduced from the Ordnance Survey Mapping with the permission of the Controller of Her Majesty's Stationery Office © Crown Copyright. Unauthorised reproduction infringes Crown Copyright and may lead to prosecution or civil proceedings.

NO FURTHER COPIES MAY BE MADE. SDCD Licence 100022500 (2018)

South Cambridgeshire Local Plan Composite Main Modifications - 2018



**Main Modification SC333b:
Delete Local Green Space
Site NH/12-152**

NH/12-151

NH/12-150

**Main Modification SC333a:
Delete Local Green Space
Site NH/12-149**

Steeple Morden

**South Cambridgeshire
Proposed Submission
Policies Map: July 2013**
Inset No. 95 Steeple Morden
Map 3 of 3
Scale 1:5000

Reproduced from the Ordnance Survey Mapping with the permission of the Controller of Her Majesty's Stationery Office © Crown Copyright. Unauthorised reproduction infringes Crown Copyright and may lead to prosecution or civil proceedings.

NO FURTHER COPIES MAY BE MADE. SDCDC Licence 100022500 (2018)

**South Cambridgeshire Local Plan
Composite Main Modifications - 2018**



**Main Modification SC334:
Delete Open Space Allocation
Policy SC/1 (1d)**

**South Cambridgeshire
Proposed Submission
Policies Map: July 2013**
Inset No. 98 Swavesey
Map 1 of 2
Scale 1:5000

Reproduced from the Ordnance Survey Mapping with the permission of the Controller of Her Majesty's Stationery Office © Crown Copyright. Unauthorised reproduction infringes Crown Copyright and may lead to prosecution or civil proceedings.

NO FURTHER COPIES MAY BE MADE. SDCD Licence 100022500 (2018)