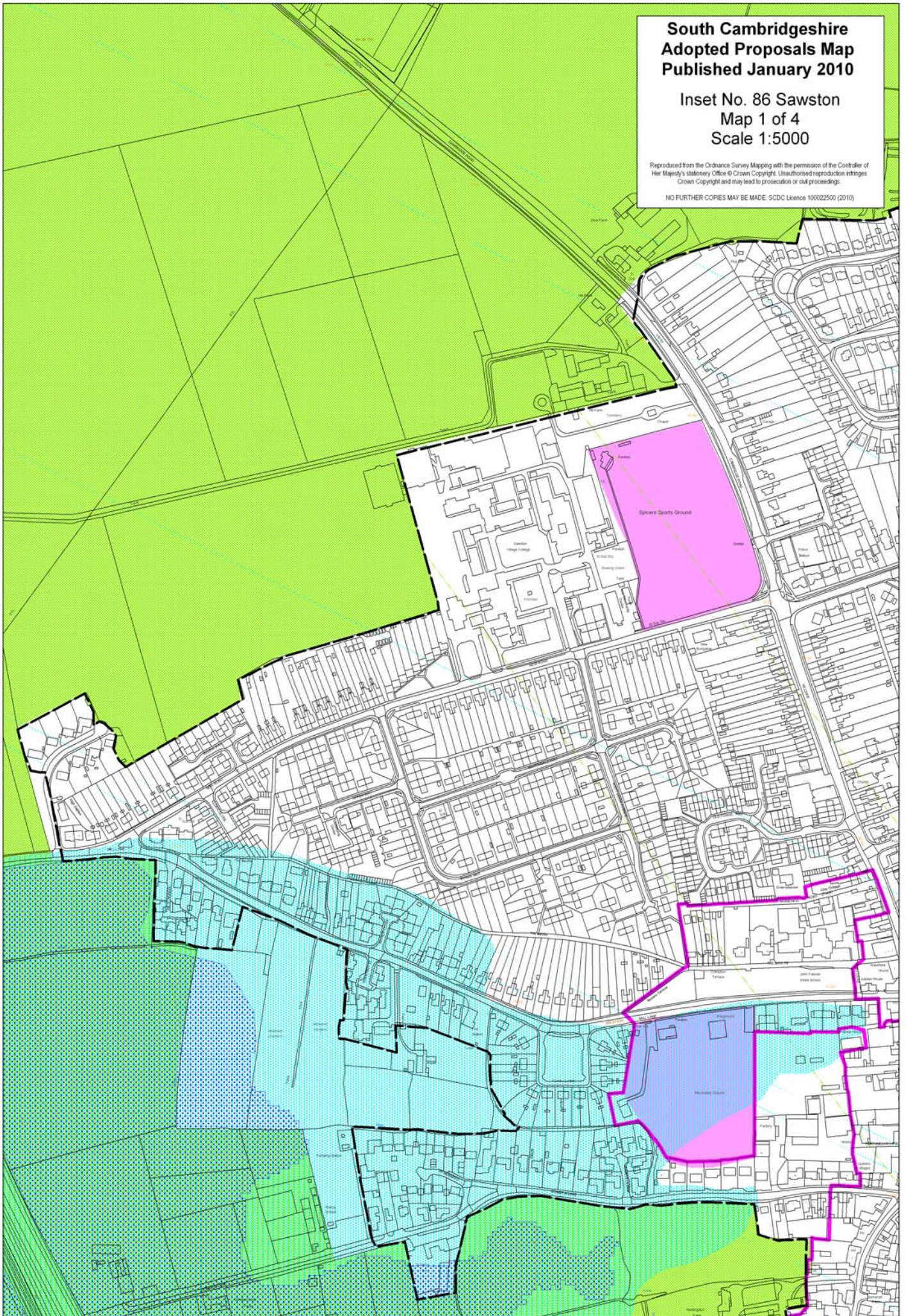


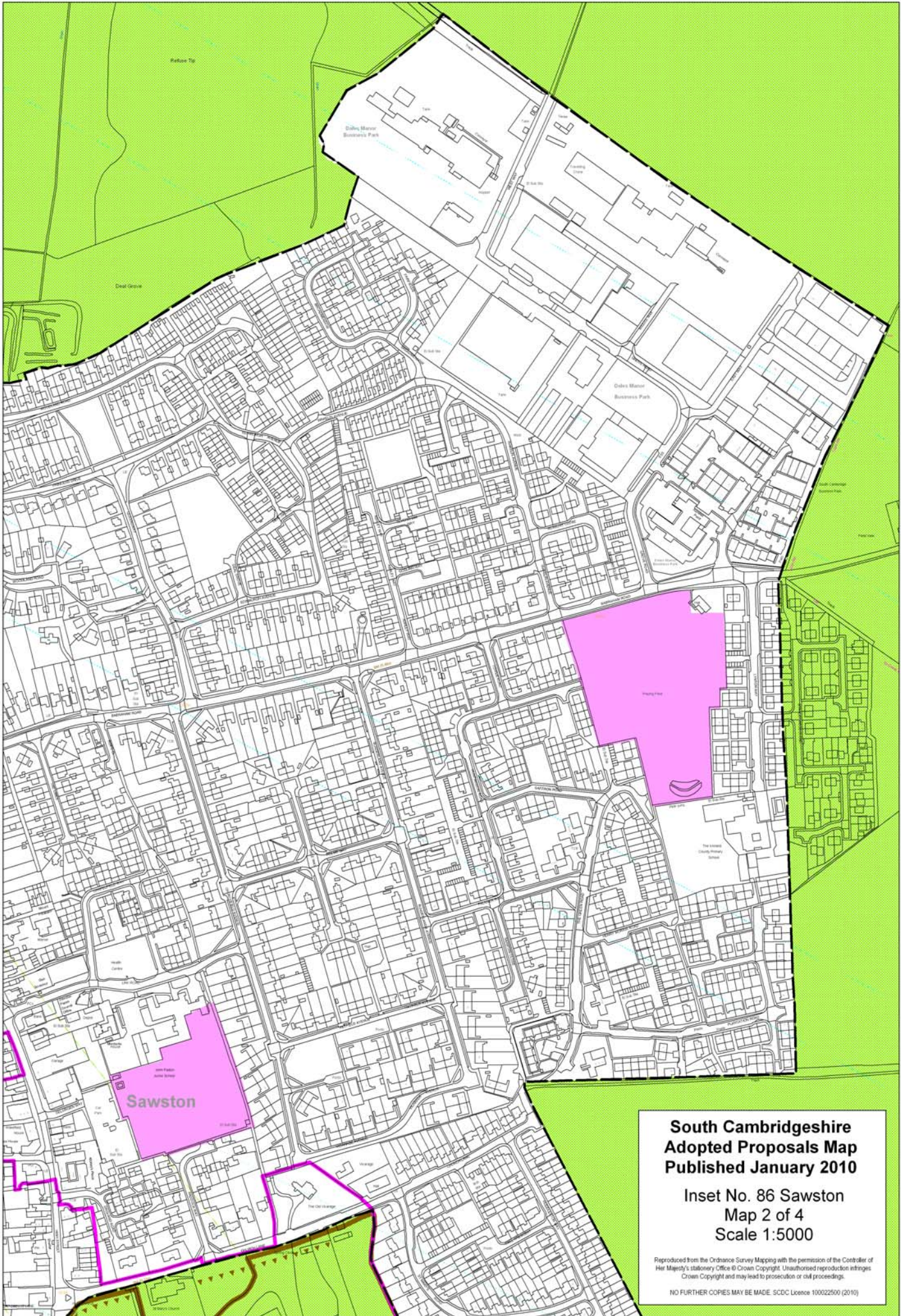
**South Cambridgeshire
Adopted Proposals Map
Published January 2010**

**Inset No. 86 Sawston
Map 1 of 4
Scale 1:5000**

Reproduced from the Ordnance Survey Mapping with the permission of the Controller of Her Majesty's Stationery Office © Crown Copyright. Unauthorised reproduction infringes Crown Copyright and may lead to prosecution or civil proceedings.

NO FURTHER COPIES MAY BE MADE. SCDC Licence 100022500 (2010)

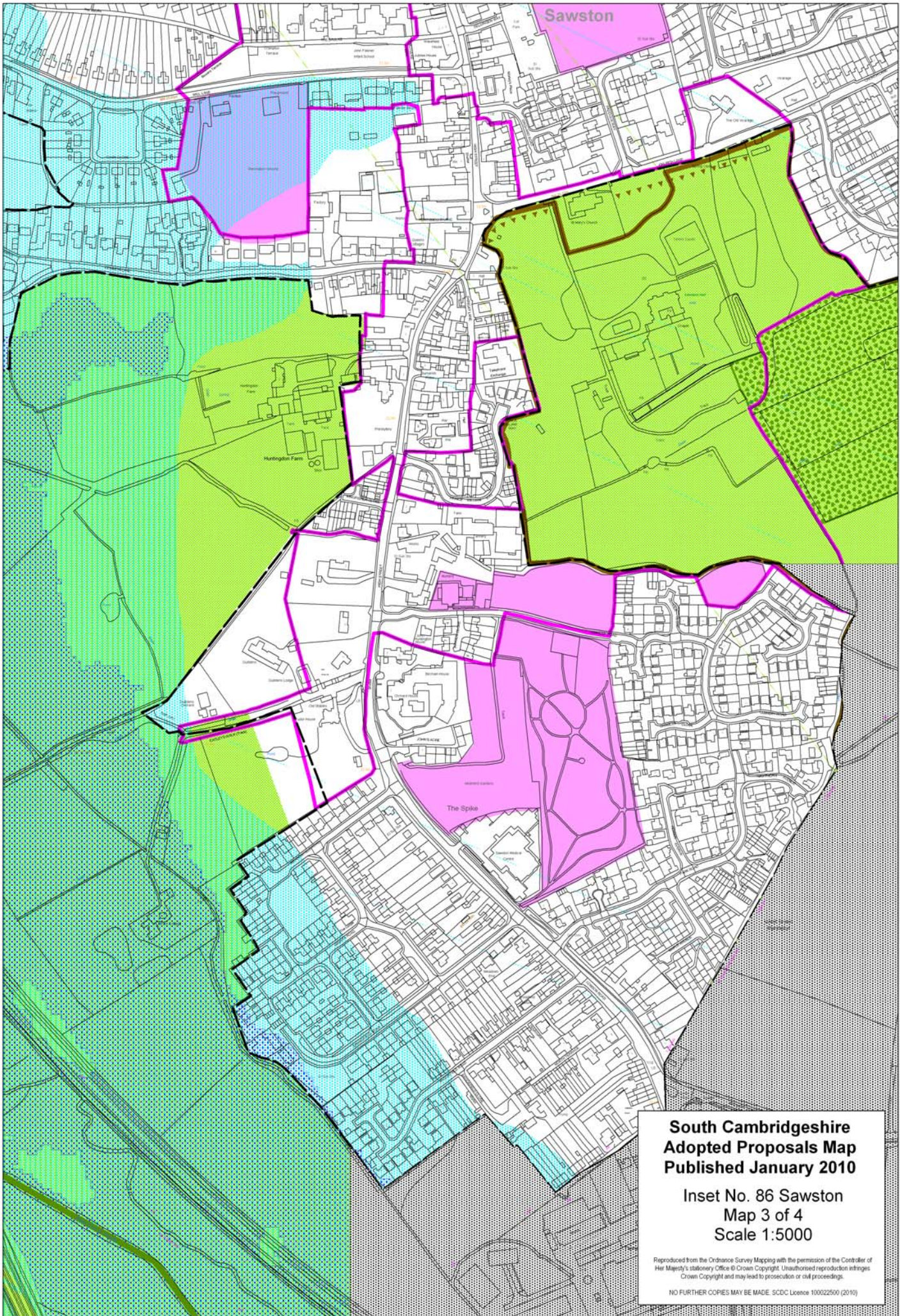




**South Cambridgeshire
Adopted Proposals Map
Published January 2010**

**Inset No. 86 Sawston
Map 2 of 4
Scale 1:5000**

Reproduced from the Ordnance Survey Mapping with the permission of the Controller of Her Majesty's Stationery Office © Crown Copyright. Unauthorised reproduction infringes Crown Copyright and may lead to prosecution or civil proceedings.
NO FURTHER COPIES MAY BE MADE. SDCDC Licence 100022500 (2010)

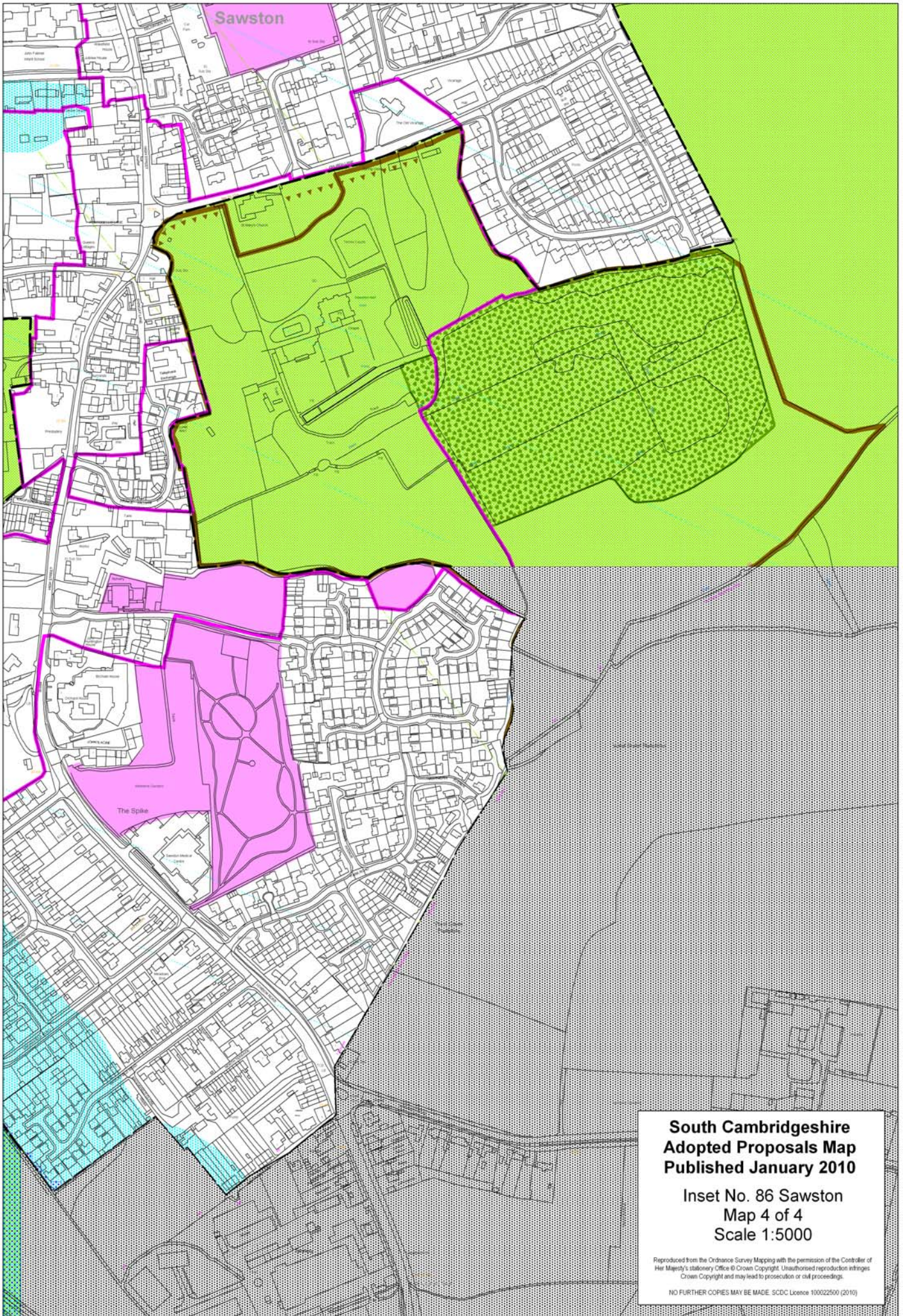


**South Cambridgeshire
Adopted Proposals Map
Published January 2010**

**Inset No. 86 Sawston
Map 3 of 4
Scale 1:5000**

Reproduced from the Ordnance Survey Mapping with the permission of the Controller of Her Majesty's Stationery Office © Crown Copyright. Unauthorised reproduction infringes Crown Copyright and may lead to prosecution or civil proceedings.

NO FURTHER COPIES MAY BE MADE. SCDC Licence 100022500 (2010)



**South Cambridgeshire
Adopted Proposals Map
Published January 2010**

**Inset No. 86 Sawston
Map 4 of 4
Scale 1:5000**

Reproduced from the Ordnance Survey Mapping with the permission of the Controller of Her Majesty's Stationery Office © Crown Copyright. Unauthorised reproduction infringes Crown Copyright and may lead to prosecution or civil proceedings.
NO FURTHER COPIES MAY BE MADE. SCDC Licence 100022500 (2010)