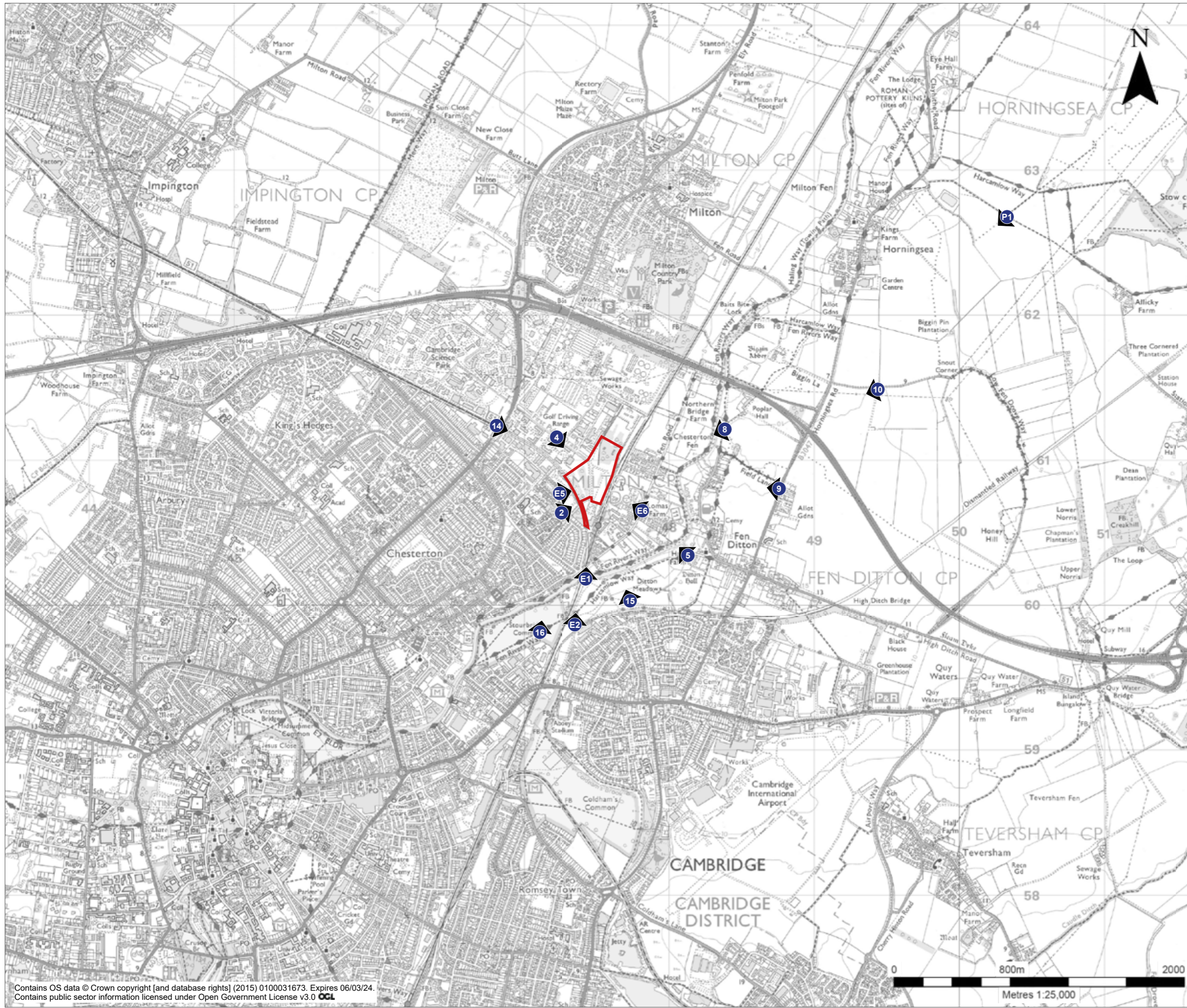




403.064598.00001.CN-001 VIEWPOINT LOCATION PLAN



KEY

-  SITE BOUNDARY
-  VIEWPOINT LOCATION

NOTES:

00	DB	JS	05/23	FIRST ISSUE.
Revision	By	Chk'd By	Date	Comments

BROOKGATE



2ND AND 3RD FLOORS,
15 MIDDLE PAVEMENT
NOTTINGHAM, NG1 7DX
T: 0115 964 7280

www.slrconsulting.com

Site
CAMBRIDGE NORTH

Project
EVIDENCE OF JEREMY SMITH

Drawing Title
VIEWPOINT LOCATION PLAN

Scale
1:25,000 @ A3

Date
MAY 23

Drawing Number

CN-001

Revision

00



FOR PLANNING

Contains OS data © Crown copyright [and database rights] (2015) 0100031673. Expires 06/03/24.
Contains public sector information licensed under Open Government License v3.0 **OGL**

403.064598.00001.CN-002 VIEWPOINT LOCATION PLAN - ADDITIONAL CONTEXT



KEY

-  SITE BOUNDARY
-  VIEWPOINT LOCATION

NOTES:

Revision	By	Chk'd By	Date	Comments
00	DB	JS	05/23	FIRST ISSUE.

BROOKGATE



2ND AND 3RD FLOORS,
15 MIDDLE PAVEMENT
NOTTINGHAM, NG1 7DX
T: 0115 964 7280

www.slrconsulting.com

Site
CAMBRIDGE NORTH

Project
EVIDENCE OF JEREMY SMITH

Drawing Title
**VIEWPOINT LOCATION PLAN -
ADDITIONAL CONTEXT**

Scale
1:25,000 @ A3

Date
MAY 23

Drawing Number

CN-002

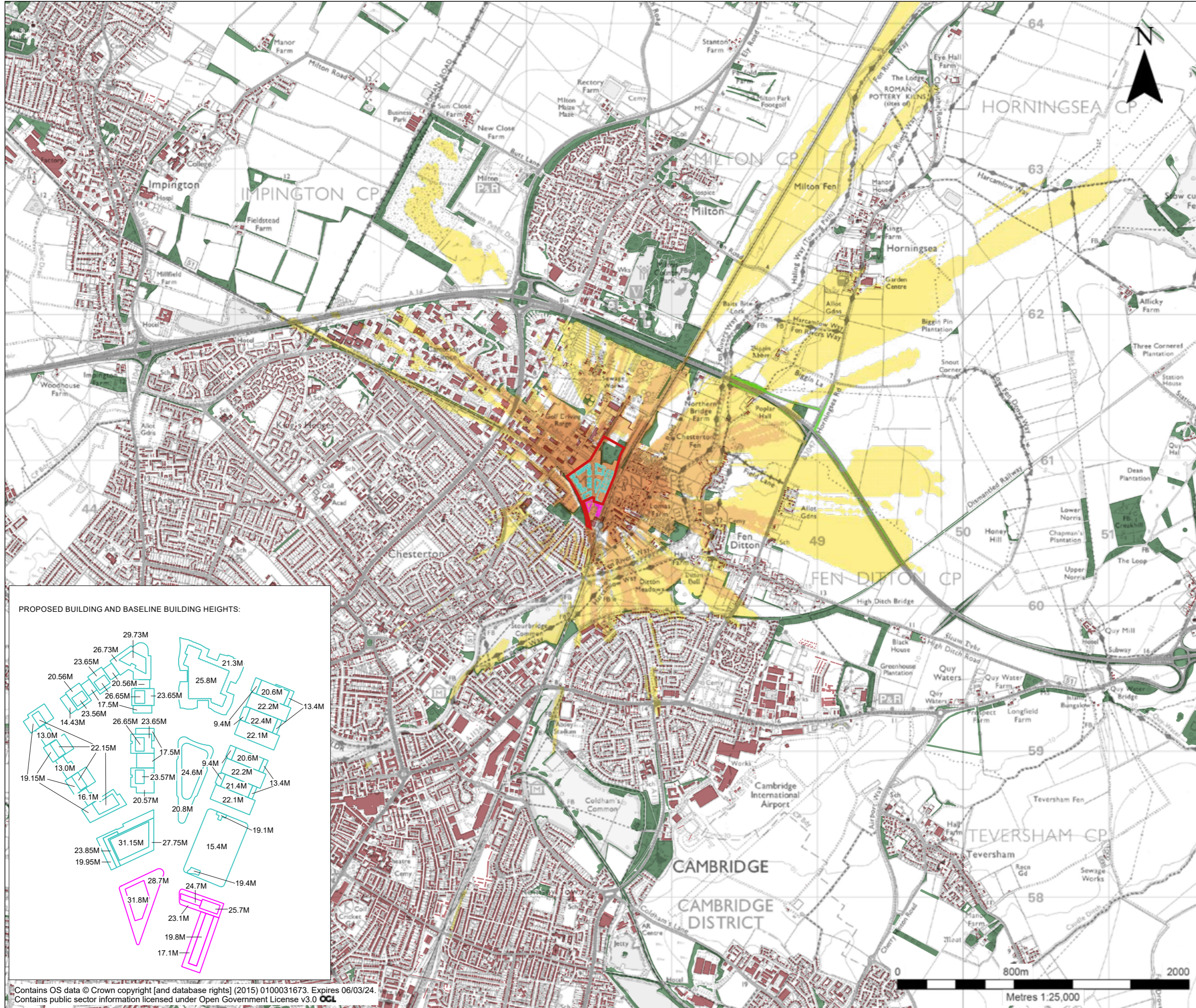
Revision

00

FOR PLANNING



Contains OS data © Crown copyright [and database rights] (2015) 0100031673. Expires 06/03/24.
Contains public sector information licensed under Open Government License v3.0 **OGL**



KEY

- SITE BOUNDARY
- AREA ASSESSED FOR ZTV BASED 3D MODEL PRODUCED BY ACME UK LTD.
- PROPOSED DEVELOPMENT (SEE INSET)

ZONES OF THERETICAL VISIBILITY:

- GREATER THAN 3 DEGREES VISIBLE VERTICAL ANGLE
- BETWEEN 1 AND 3 DEGREES VISIBLE VERTICAL ANGLE
- BETWEEN 0.25 AND 1 DEGREES VISIBLE VERTICAL ANGLE

VISUAL BARRIERS:

- EXISTING BUILT DEVELOPMENT (SEE INSET)
- EXISTING BUILT DEVELOPMENT (THE EXTENT OF BUILT DEVELOPMENT IS TAKEN FROM OS OPENMAP - LOCAL MAPPING, WITH THE ZTV OUTPUT BEING BASED ON THESE ELEMENTS BEING 9M HIGH RELATIVE TO GROUND LEVEL)
- EXISTING WOODLAND (THE EXTENT OF BUILT DEVELOPMENT IS TAKEN FROM OS OPENMAP - LOCAL MAPPING, WITH THE ZTV OUTPUT BEING BASED ON THESE ELEMENTS BEING 10M HIGH RELATIVE TO GROUND LEVEL)
- EXISTING WOODLAND - ALONG A14 (THE EXTENT OF BUILT DEVELOPMENT IS TAKEN FROM OS OPENMAP - LOCAL MAPPING, WITH THE ZTV OUTPUT BEING BASED ON THESE ELEMENTS BEING 5M HIGH RELATIVE TO GROUND LEVEL)

NOTES:

Revision	By	Chk'd By	Date	Comments
00	DB	JS	05/23	FIRST ISSUE.

BROOKGATE

SLR

2ND AND 3RD FLOORS,
15 MIDDLE PAVEMENT
NOTTINGHAM, NG1 7DX
T: 0115 964 7280

www.slrconsulting.com

Site
CAMBRIDGE NORTH

Project
EVIDENCE OF JEREMY SMITH

Drawing Title
ZONE OF THEORETICAL VISIBILITY - PROPOSED DEVELOPMENT

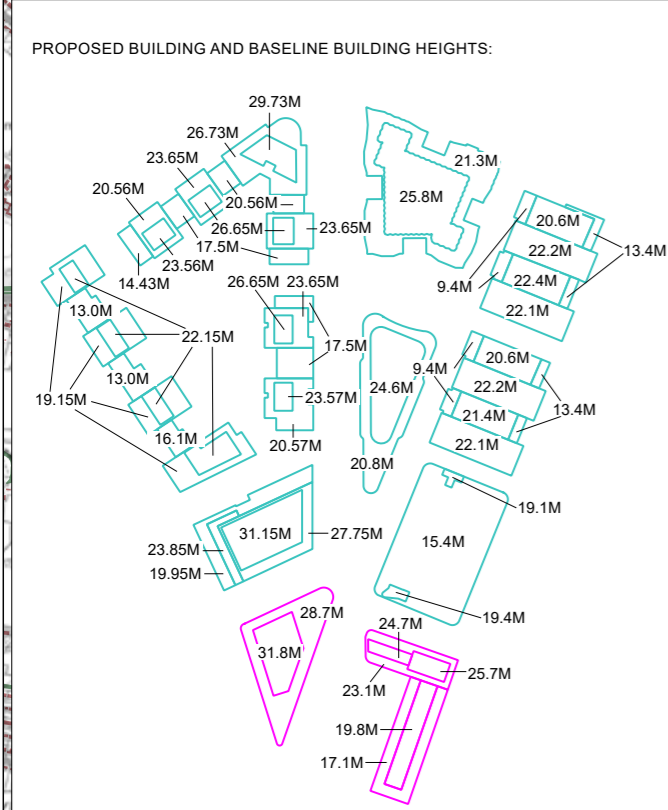
Scale
1:25,000 @ A3

Date
MAY 23

Drawing Number
CN-003

Revision
00

FOR PLANNING



403.064598.00001.CN-003 ZTV - PROPOSED DEVELOPMENT

Contains OS data © Crown copyright [and database rights] (2015) 0100031673. Expires 06/03/24.
Contains public sector information licensed under Open Government License v3.0 **OGL**