

4. Commercial Public Realm

LANDSCAPE AND OPEN SPACE

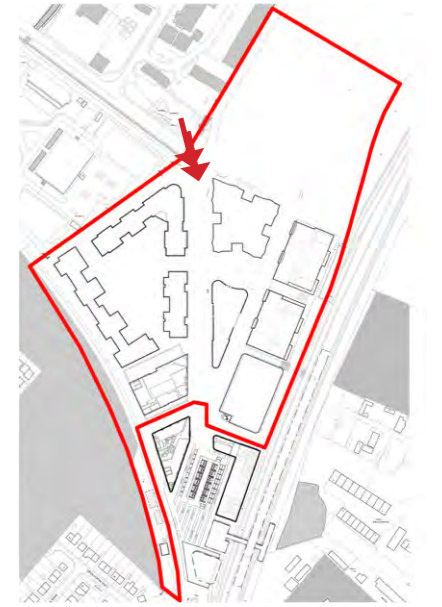
KEY SPACES: COWLEY CIRCUS

Entry to the development is marked by a corner focal point at the apex of a landmark building.



LANDSCAPE AND OPEN SPACE

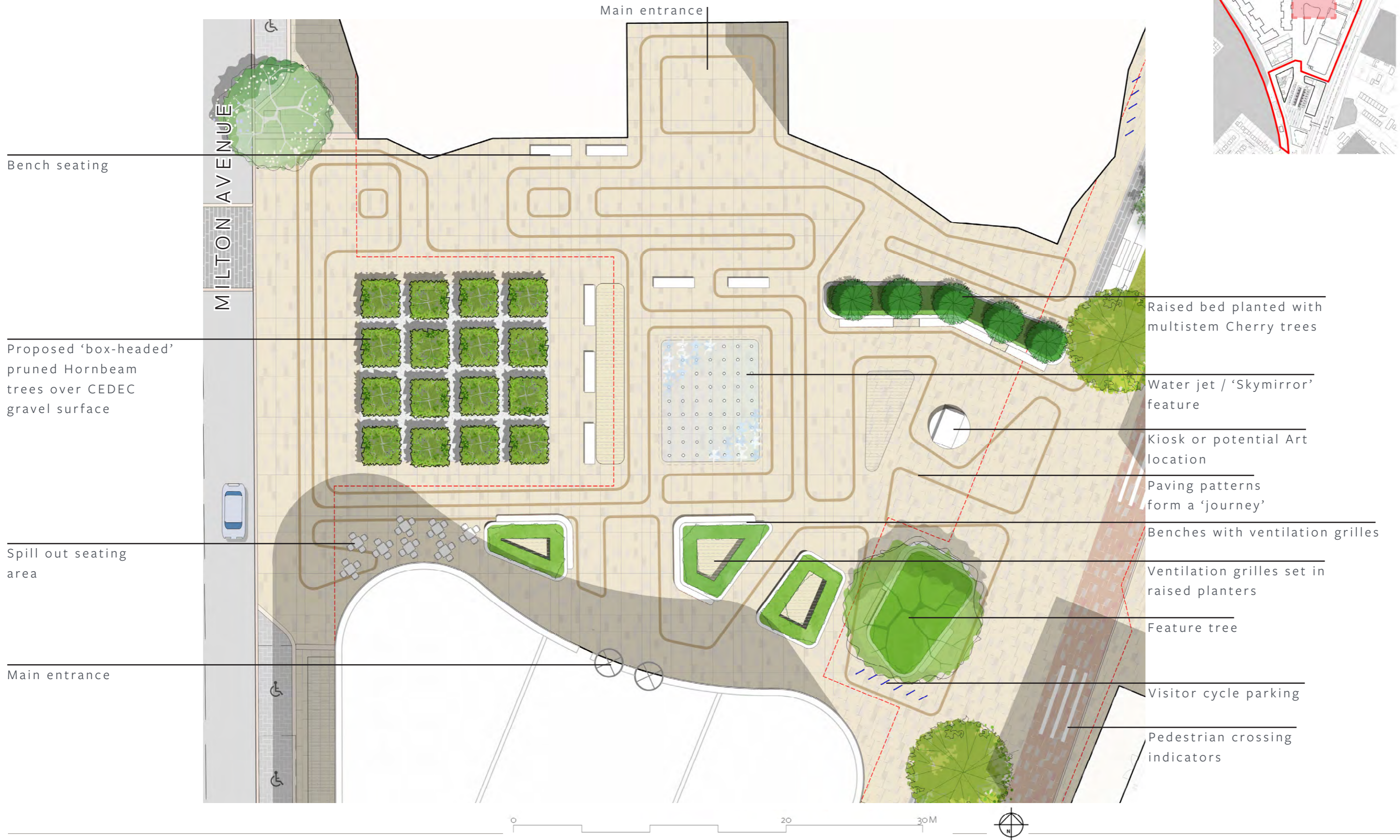
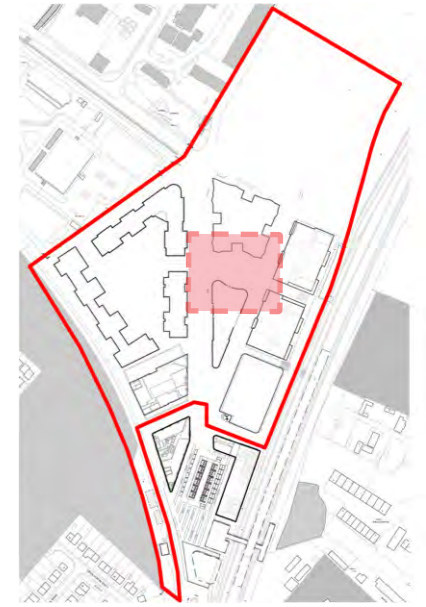
KEY SPACES: COWLEY CIRCUS VISUALISATION



LANDSCAPE AND OPEN SPACE

KEY SPACES: CHESTERTON SQUARE

An urban square with flexible, hard-paved spaces, a grid of structural trees and a jet water feature that can act as a 'sky mirror'. A wide paving band travels through the square, overlaid on a subtle colour 'mosaic' of paving blocks.



Bench seating

Proposed 'box-headed' pruned Hornbeam trees over CEDEC gravel surface

Spill out seating area

Main entrance

Main entrance

MILTON AVENUE

Raised bed planted with multistem Cherry trees

Water jet / 'Skymirror' feature

Kiosk or potential Art location

Paving patterns form a 'journey'

Benches with ventilation grilles

Ventilation grilles set in raised planters

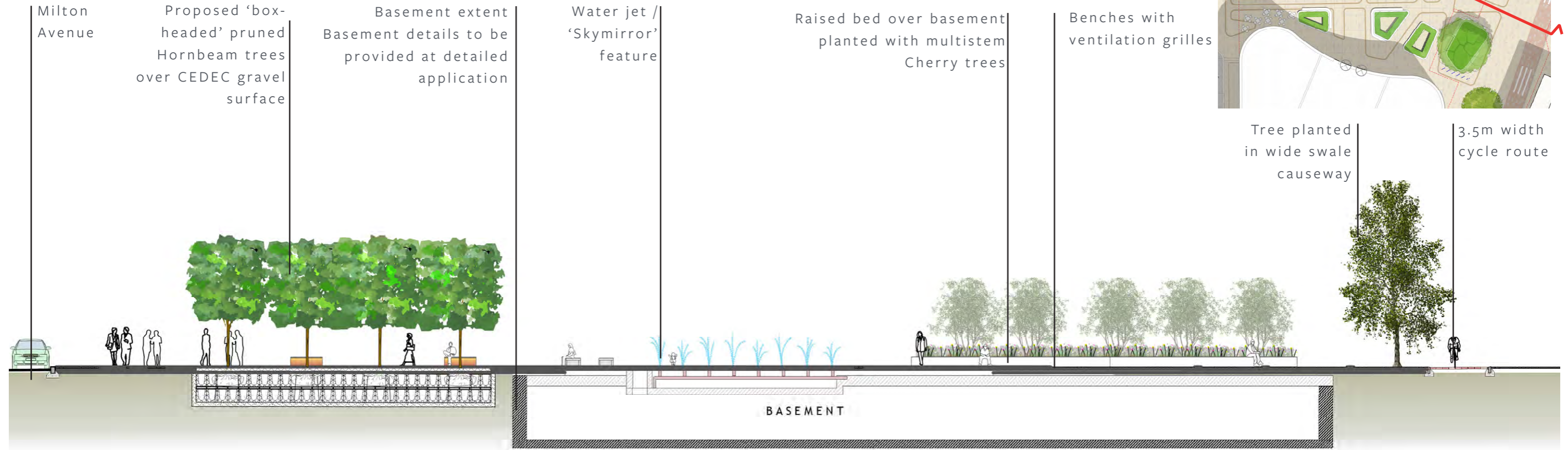
Feature tree

Visitor cycle parking

Pedestrian crossing indicators

LANDSCAPE AND OPEN SPACE

KEY SPACES: CHESTERTON SQUARE



SECTION



VISUALISATION LOOKING EAST



VISUALISATION LOOKING WEST