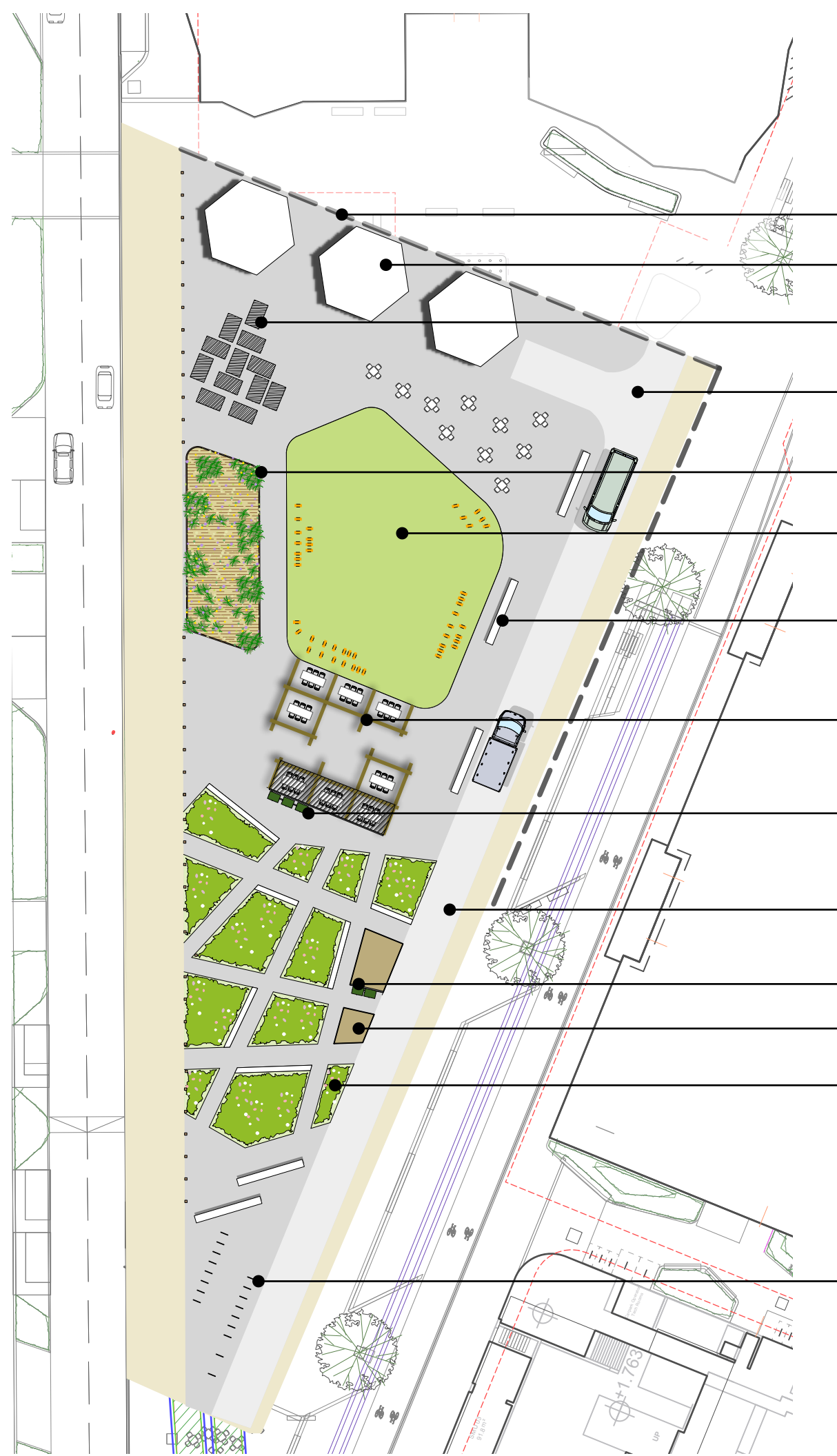


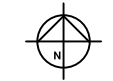


P-2 Areas of Meanwhile Use  
Scale: NTS



- Hoarding
- Coffee kiosks or tent/shelters
- 'Upcycled' timber seating platforms
- Food truck turning
- Open mosaic habitat seeding in edged ground level planters
- Seasonal lawn or flexible space
- 'Upcycled' timber benches
- Pergola seating
- Covered pergola with rainwater harvesting to adjacent water butts
- Food truck areas
- Water butts attached to roofed shelter
- Enclosure/storage for community growing
- 'Upcycled' low raised timber planter allotment beds with seating (335m2 area shown)
- Bicycle parking

P-1 Typical Meanwhile Use Pocket Park Plan  
Scale 1:500 @ A3



NOTES

DO NOT SCALE FROM THIS DRAWING TO BE READ IN COLOUR  
Contractors, sub-contractors and suppliers are to verify any critical dimensions on site prior to commencing work, fabrication or construction of any elements. Any discrepancies or errors must be brought to the attention of Robert Myers Associates.  
All structural elements are shown indicatively. For all elements of structure, refer to structural engineers' and specialist sub-contractor/fabricators' design, detail and specification.  
The drawings are to be read in conjunction with all relevant landscape architect, consultant and specialist drawings.  
This drawing is to be read specifically in conjunction with:  
630\_01(MP)001 Landscape Masterplan.

LOCATION PLAN SCALE: NTS



PURPOSE OF ISSUE

Rev:	Date:	Drawing Status:
P1	27.05.22	FOR PLANNING
P2	12.10.22	FOR PLANNING

REVISIONS

Rev:	Date:	Description:
P2	12.10.22	Features and growing adjusted to officer comments

CAMBRIDGE NORTH

Client:	Brookgate		
Drawing:	Typical Meanwhile Use for Pocket Park		
Project No:	630_01		
Drawing No:	630_01 (MP) 210		
Scale:	1:500@ A3	Rev:	P2
Date:	May 2022	Drawn:	EH
Checked:	JB	PM Checked:	RM

Robert Myers Associates  
LANDSCAPE ARCHITECTURE

13-15 Covent Garden  
Cambridge  
CB1 2HS  
Tel: +44 (0) 1223 351400

info@robertmyers-associates.co.uk  
www.robertmyers-associates.co.uk

DO NOT SCALE FROM THIS DRAWING  
© Robert Myers Associates