

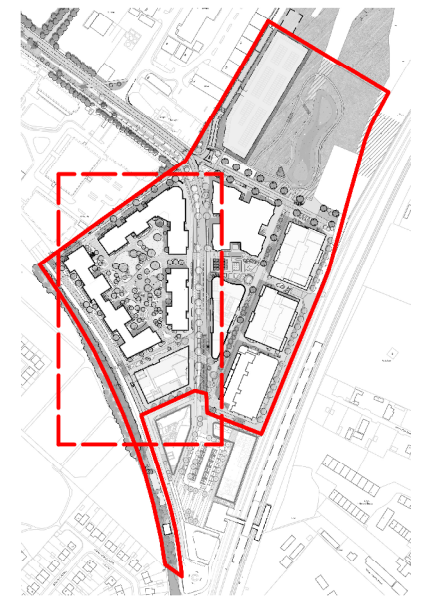
Number of Visitor Cycle Stands
 1 Milton Avenue:
 28 - Standard Sheffield stands (56 spaces)
 4 - Oversized Sheffield stands (8 spaces)

Residential:
 47 - Standard Sheffield stands (94 spaces)
 12 - Oversized Sheffield stands (24 spaces)

NOTES

TO BE READ IN COLOUR
 DO NOT SCALE FROM THIS DRAWING
 Contractors, sub-contractors and suppliers are to verify any critical dimensions on site prior to commencing work, fabrication or construction of any elements.
 Any discrepancies or errors must be brought to the attention of Robert Myers Associates.
 All structural elements are shown indicatively. For all elements of structure, refer to structural engineers' and specialist sub-contractor/fabricators' design, detail and specification.
 The drawings are to be read in conjunction with all relevant landscape architect, consultant and specialist drawings.
 This drawing is to be read specifically in conjunction with:
 630_01(DN)002 Outline Landscape Specification;
 630_01(MP)016 Furniture Strategy (East); and
 630_01(MP)017 Furniture Strategy (Wild Park).

LOCATION PLAN SCALE: NTS



PURPOSE OF ISSUE

| Rev: | Date: | Drawing Status: |
|------|----------|-----------------|
| P1 | 07.10.22 | FOR PLANNING |

REVISIONS

| Rev: | Date: | Description: |
|------|----------|--------------|
| P1 | 07.10.22 | First Issue |

CAMBRIDGE NORTH

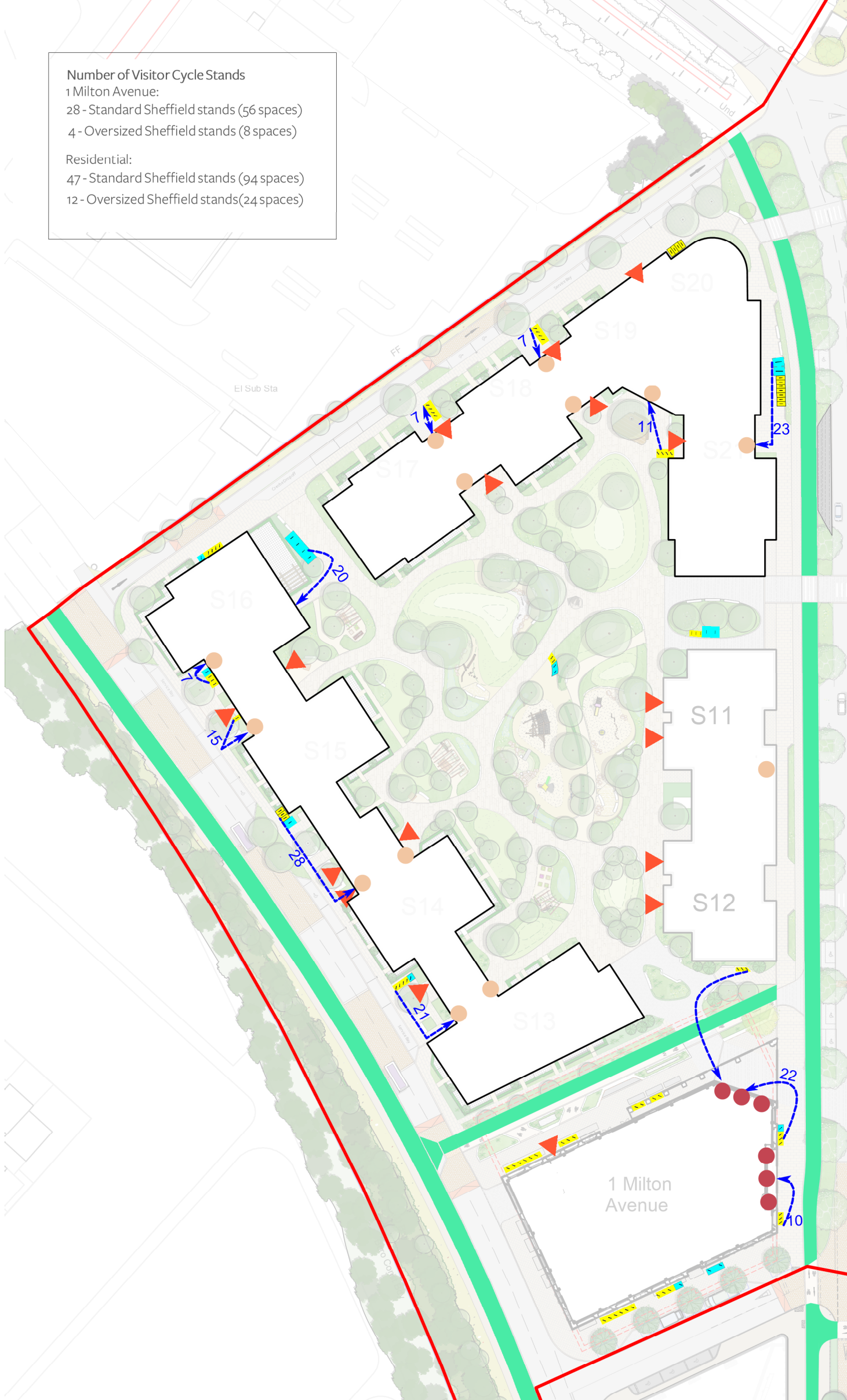
Client: Brookgate
 Drawing: Cycle Strategy (West)
 Project No: 630_01
 Drawing No: 630_01(MP)022
 Scale: 1:1000 @ A3
 Date: October 2022
 Checked: JB
 Rev: P1
 Drawn: EL
 PM Checked: -



13-15 Covent Garden
 Cambridge
 CB1 2HS
 Tel: +44 (0) 1223 351400

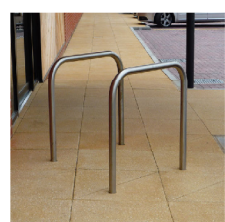
info@robertmyers-associates.co.uk
 www.robertmyers-associates.co.uk

DO NOT SCALE FROM THIS DRAWING
 © Robert Myers Associates

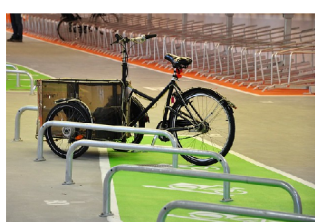


- KEY**
- Site boundary
 - Dedicated cycle route
 - ↔ Distance (in metre) from cycle parking to building entry
 - Main building entry
 - Indicative building entry (to be determined at detailed applications)
 - ▶ Entrance to internal cycle stores
 - ▶ Indicative entrance to cycle stores (to be determined at detailed application)
 - /// Sheffield stainless steel cycle stands
Either angled where space is limited or at 90 degrees
 - /// Oversize Sheffield stand
For cargo and non-standard cycles

P-1 Cycle Strategy (West)
 Scale 1:1000 @ A3



Sheffield Stand



Cargo and recumbent stands