


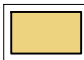
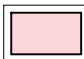
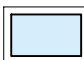

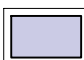
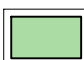
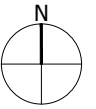


LEGEND

-  Appeal Site Boundary
- National Landscape Character Areas: #
 -  Area 87: East Anglian Chalk
 -  Area 88: Bedfordshire and Cambridgeshire Claylands
- Local Landscape Character Areas (Types) +
 -  Cambridge Urban Area
 -  1E: Fulbourn Fen (The Fens)
 -  6A: Fen Ditton Fen Edge Chalklands (Fen Edge Chalklands)
 -  6B: Wilbraham Fen Edge Chalklands (Fen Edge Chalklands)
 -  6C: Fulbourn Fen Edge Chalklands (Fen Edge Chalklands)
 -  7B: Gog Magog Chalk Hills (Chalk Hills)



Sources:
 # Natural England GIS Data Set
 + Greater Cambridge Landscape Character Assessment, February 2021

FIGURE LT3

Project
Land at Teversham Road, Fulbourn
 Drawing Title
Landscape Character Plan

Date	Scale	Drawn by	Check by
22.04.2022	1:20,000 @A3	AK	LT
Project No	Drawing No	Revision	
25542	LN-LP-103	-	



Town Planning • Master Planning & Urban Design • Architecture •
 Landscape Planning & Design • Infrastructure & Environmental Planning •
 Heritage • Graphic Communication •
 Communications & Engagement • Development Economics

bartonwillmore.co.uk 