

PLANTING SCHEDULE FOR DRAWING NO 4017

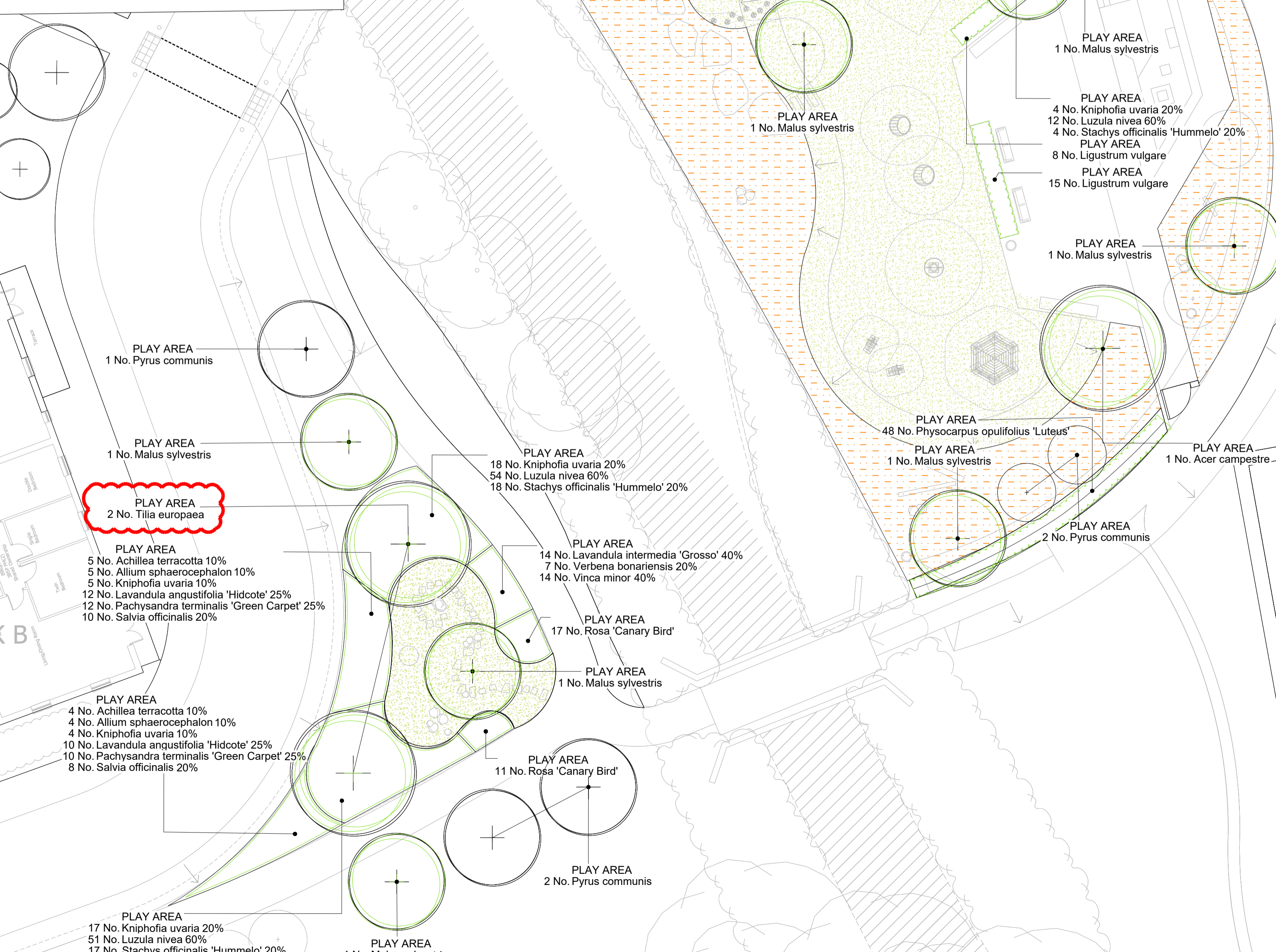
Number	Species	Specification	Girth	Height
1 No.	Acer campestre	Semi-Mature:Clear Stem min. 200 :4x :BR	16-18cm	4.0-4.5m
3 No.	Carpinus betulus 'A. Beekman'	Semi-Mature:Clear Stem min. 200 :4x :BR	16-18cm	4.0 - 4.5m
7 No.	Malus sylvestris	Standard:Clear Stem min. 200 :3x :RB Rootstock-M25	14-16cm	3.0-3.5m
8 No.	Pyrus communis	Half Standard:Clear Stem min. 200 :3x :RB Rootstock-Quince A	14-16cm	3.0-3.5m
3 No.	Tilia europaea	Semi-Mature:Clear Stem min. 200 :4x :BR	16-18cm	4.0 - 4.5m

LINEAR PARK - PLANTING

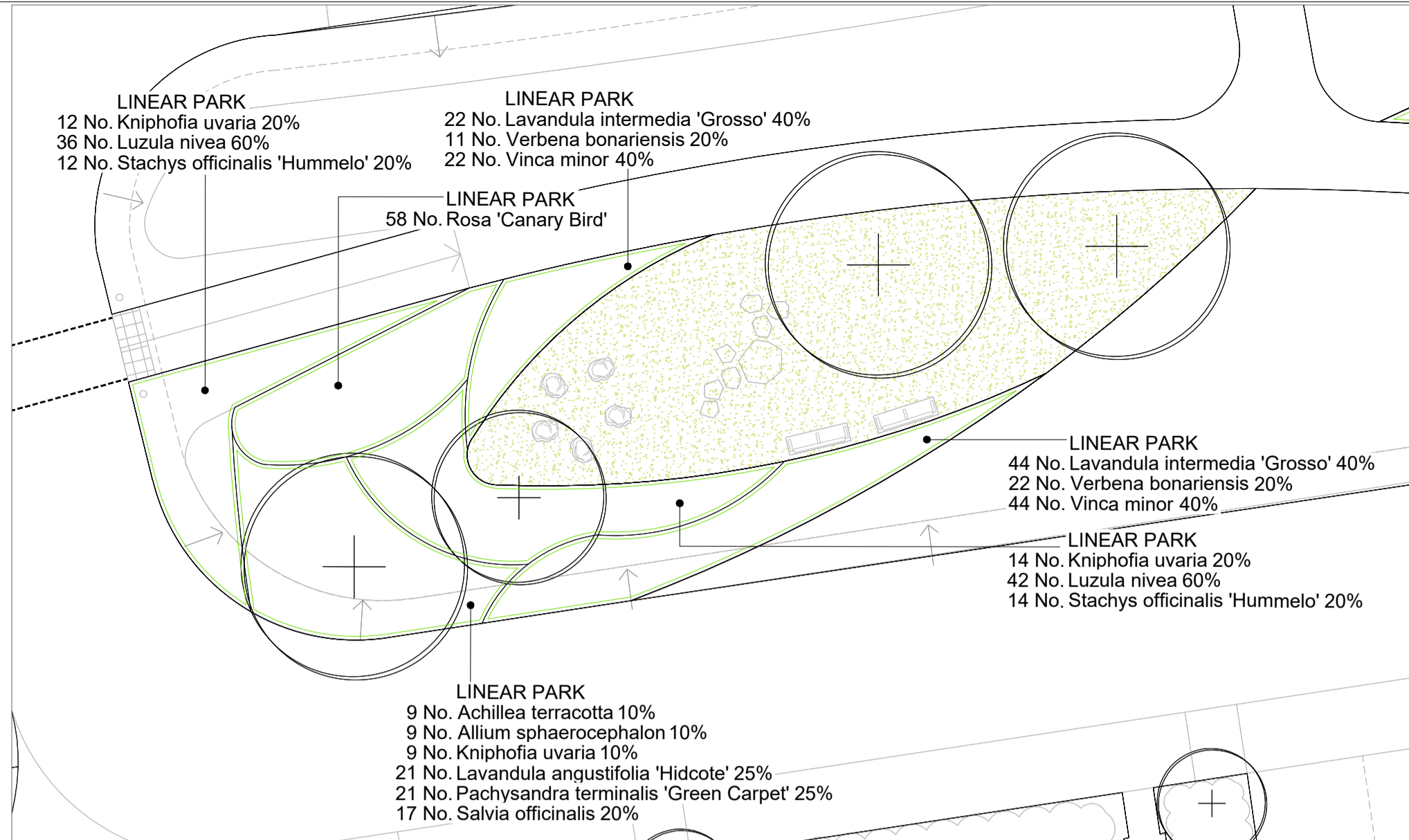
Number	Species	Pot Size	Density
9 No.	Achillea terracotta	5L	3/m ²
9 No.	Allium sphaerocephalon	5L	3/m ²
68 No.	Kniphofia uvaria	5L	3/m ²
22 No.	Lavandula angustifolia 'Hidcote'	5L	3/m ²
14 No.	Lavandula intermedia 'Grosso'	3L	5/m ²
23 No.	Ligustrum vulgare	5L	0.4Ctr
177 No.	Luzula nivea	5L	3/m ²
22 No.	Pachysandra terminalis 'Green Carpet'	5L	3/m ²
144 No.	Physocarpus opulifolius 'Luteus'	5L	3/m
28 No.	Rosa 'Canary Bird'	5L	3/m ²
18 No.	Salvia officinalis	5L	3/m ²
59 No.	Stachys officinalis 'Hummelo'	5L	3/m ²
7 No.	Verbena bonariensis	3L	5/m ²
14 No.	Vinca minor	3L	5/m ²

PLAY AREA

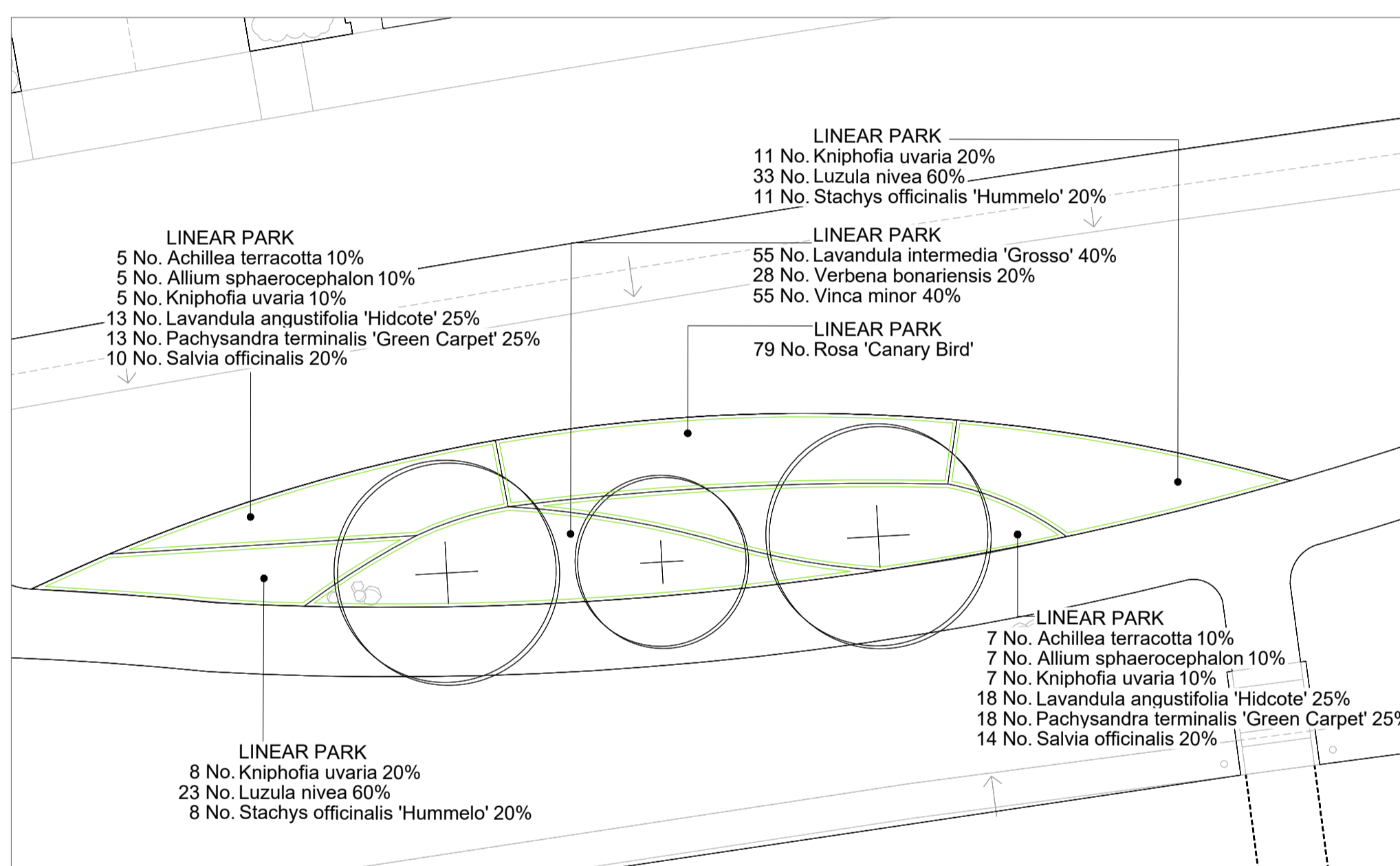
Number	Species	Pot Size	Density
9 No.	Achillea terracotta	5L	3/m ²
9 No.	Allium sphaerocephalon	5L	3/m ²
68 No.	Kniphofia uvaria	5L	3/m ²
22 No.	Lavandula angustifolia 'Hidcote'	5L	3/m ²
14 No.	Lavandula intermedia 'Grosso'	3L	5/m ²
23 No.	Ligustrum vulgare	5L	0.4Ctr
177 No.	Luzula nivea	5L	3/m ²
22 No.	Pachysandra terminalis 'Green Carpet'	5L	3/m ²
144 No.	Physocarpus opulifolius 'Luteus'	5L	3/m
28 No.	Rosa 'Canary Bird'	5L	3/m ²
18 No.	Salvia officinalis	5L	3/m ²
59 No.	Stachys officinalis 'Hummelo'	5L	3/m ²
7 No.	Verbena bonariensis	3L	5/m ²
14 No.	Vinca minor	3L	5/m ²



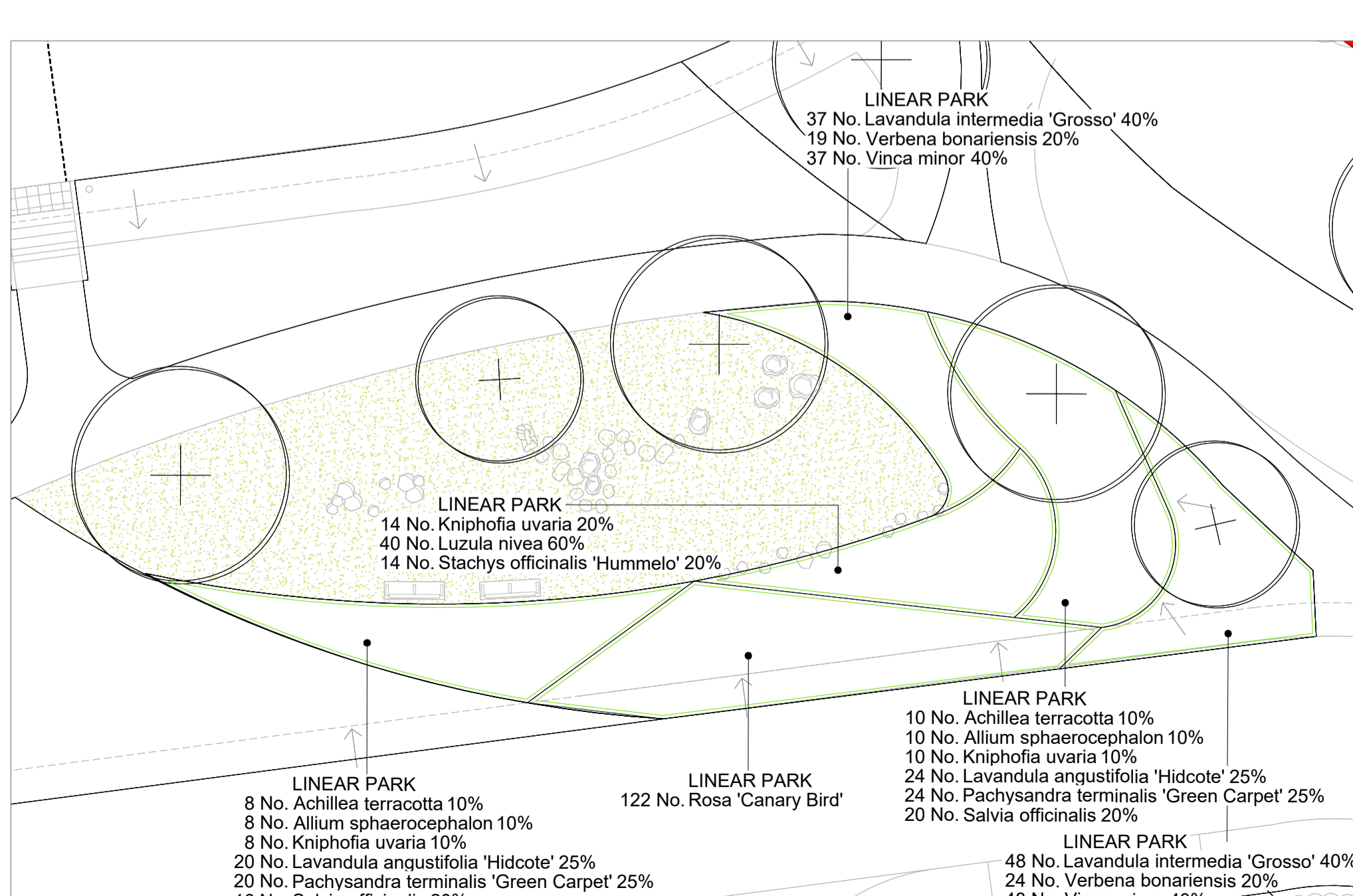
PLANTING PLAN A



PLANTING PLAN B



PLANTING PLAN C



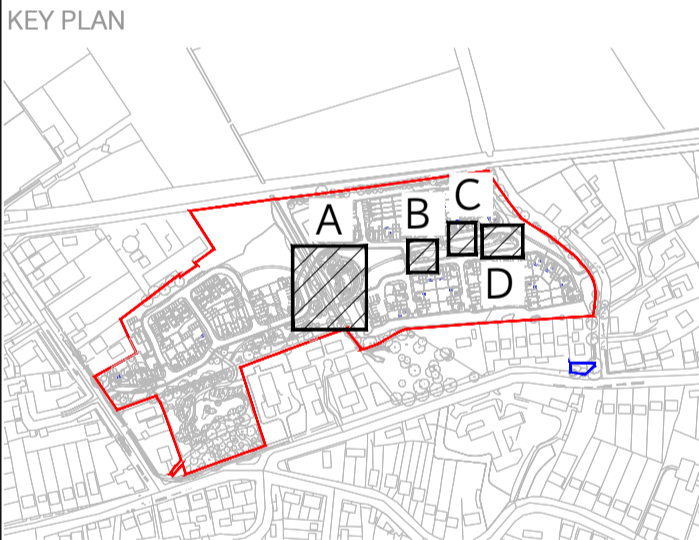
PLANTING PLAN D

This document should not be relied on or used in circumstances other than those for which it was prepared and for which Chris Blandford Associates was commissioned. Chris Blandford Associates accepts no responsibility for this document to any other party other than the person by whom it was commissioned.

KEY

- Site / Application boundary
- Other Land Under Applicant's Control
- Proposed lawn: Lindum Festival Landscape Turf - L17
- Essence of the Land Product: Meadow Mixture EM2 Supplier: Emorsgate Seeds
- Proposed trees
- Planting

NOTE:
For overall planting schedule refer to drawing TRF-CBA-1-GF-M2-L-4011



Rev	Date	Drw	SM	Issued For	Reason or reason for Issue
P3	23/06/20	P3		Revised submission	
P2	13/03/20	PC		Revised submission	
P1	02/03/20	PC		Revised Reserved Matters Application	
SO	08/11/19	SM		Stage 3 Issue	
PO	13/09/19	SM		Issued For Planning	



CHRIS BLANDFORD ASSOCIATES
landscape | environment | heritage

The Print Rooms Studio 511 164/180 Union St Waterloo London SE1 0LH
T +44 (0)20 7089 6480 E mail:cbastudios.com W www.cbastudios.com

Client
Castlefield International Limited

Project Title
TEVERSHAM ROAD FULBOURN

Drawing Series and Title
**4000 SERIES
Planting Plan Sheet 6 of 6**

Scale @ A1
1:150

Drawn
PC

Date
SEP 2019

Approved
AS

FOR PLANNING

Drawing number
TRF-CBA-1-GF-M2-L-4017

Revision
P3