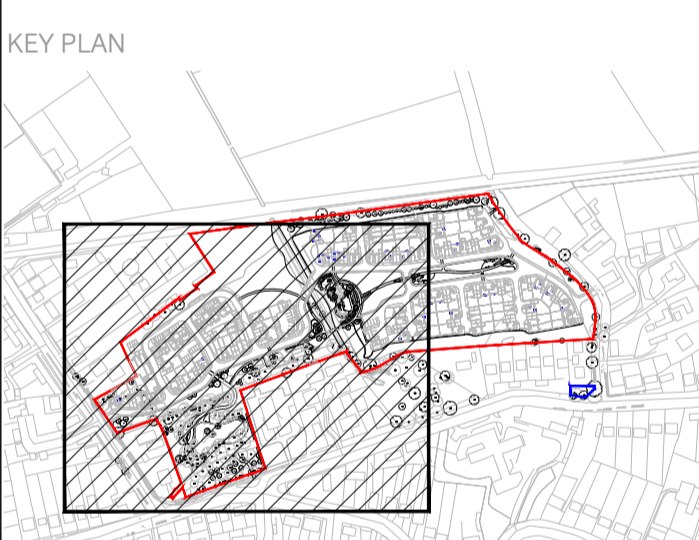


This document should not be relied on or used in circumstances other than those for which it was prepared and for which Chris Blandford Associates was commissioned. Chris Blandford Associates accepts no responsibility for this document to any other party other than the person by whom it was commissioned.

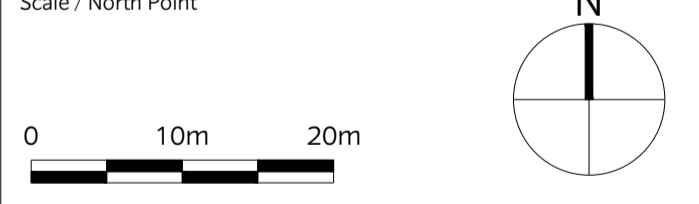
- KEY**
- Site boundary
  - Other Land Under Applicant's Control
  - Existing trees to be retained
  - Proposed trees
  - Proposed Meadow Area - 1175 m<sup>2</sup>
  - Proposed native buffer planting
  - Proposed native tree / shrub mix
  - Proposed aquatic / marginal planting Area - 500 m<sup>2</sup> approx. For list of proposed species, refer to Planting strategy drawings: TRF-CBA-1-GF-M2-L-4000 & TRF-CBA-1-GF-M2-L-4001

**NOTE:**

- For informal play & LEAP planting plans refer to drawing TRF-CBA-1-GF-M2-L-4017
- For overall planting schedule refer to drawing TRF-CBA-1-GF-M2-L-4011



|     |          |     |                                      |
|-----|----------|-----|--------------------------------------|
| P2  | 23/06/20 | PC  | Revised submission                   |
| P1  | 02/03/20 | PC  | Revised Reserved Matters Application |
| SO  | 08/11/19 | SM  | Stage 3 Issue                        |
| PO  | 13/09/19 | SM  | Issued For Planning                  |
| Rev | Date     | Drw | Revision or reason for Issue         |



**CHRIS BLANDFORD ASSOCIATES**  
 landscape | environment | heritage  
 The Print Rooms Studio 511 164/180 Union St Waterloo London SE1 0LH  
 T +44 (0)20 7089 6480 E mail@cbastudios.com W www.cbastudios.com

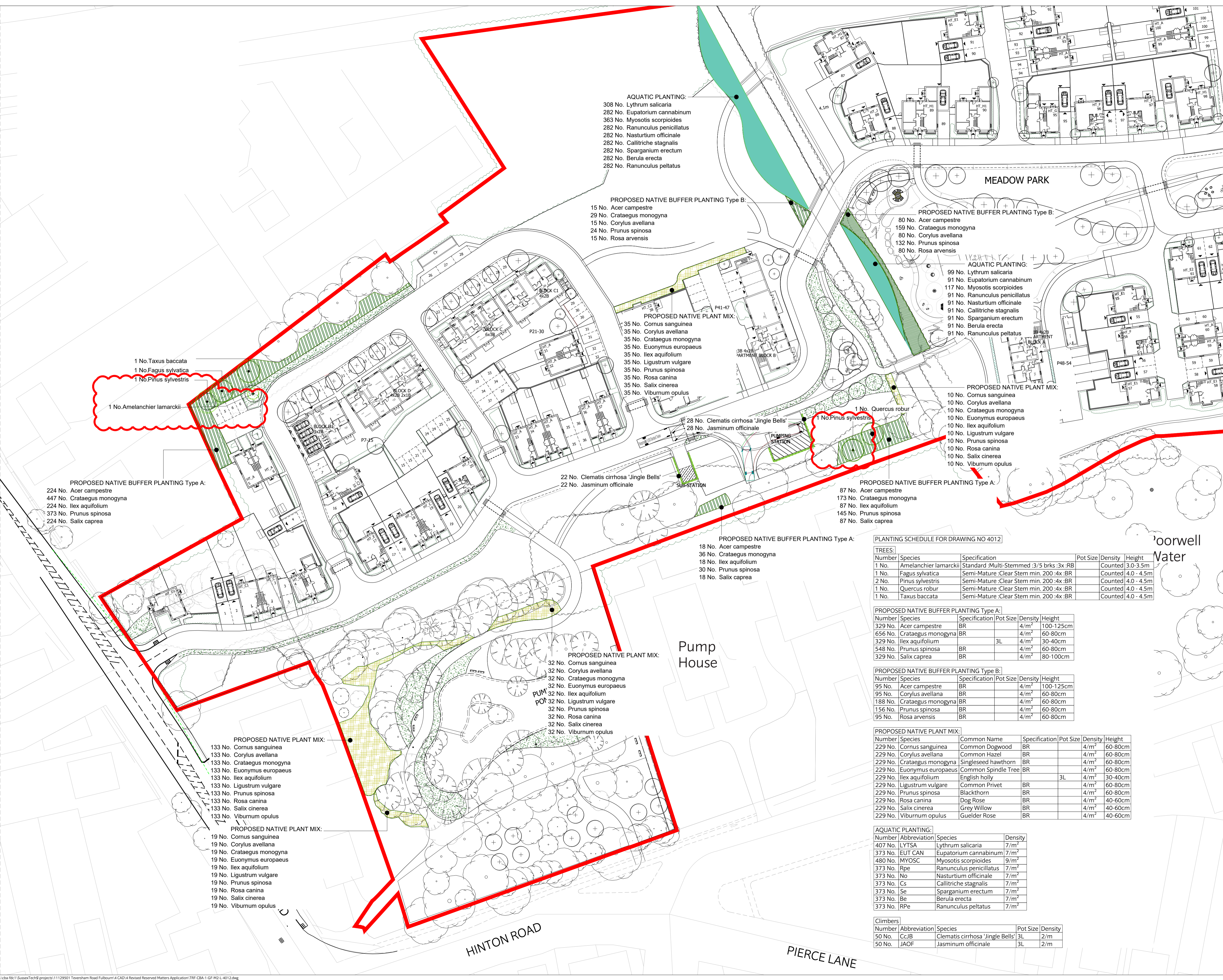
Client  
**Castlefield International Limited**

Project Title  
**TEVERSHAM ROAD FULBOURN**

Drawing Series and Title  
**4000 SERIES**  
**Planting Plan Sheet 1 of 6**

Scale @ A1  
 1:500  
 Drawn  
 PC  
 Approved  
 AS  
 Date  
 SEP 2019  
 Drawing Status  
**FOR PLANNING**

Drawing number  
**TRF-CBA-1-GF-M2-L-4012**  
 Revision  
**P2**



- AQUATIC PLANTING:**
- 308 No. Lythrum salicaria
  - 282 No. Eupatorium cannabinum
  - 363 No. Myosotis scorpioides
  - 282 No. Ranunculus penicillatus
  - 282 No. Nasturtium officinale
  - 282 No. Callitriche stagnalis
  - 282 No. Sparganium erectum
  - 282 No. Berula erecta
  - 282 No. Ranunculus peltatus

- PROPOSED NATIVE BUFFER PLANTING Type B:**
- 15 No. Acer campestre
  - 29 No. Crataegus monogyna
  - 15 No. Corylus avellana
  - 24 No. Prunus spinosa
  - 15 No. Rosa arvensis

- PROPOSED NATIVE BUFFER PLANTING Type B:**
- 80 No. Acer campestre
  - 159 No. Crataegus monogyna
  - 80 No. Corylus avellana
  - 132 No. Prunus spinosa
  - 80 No. Rosa arvensis

- AQUATIC PLANTING:**
- 99 No. Lythrum salicaria
  - 91 No. Eupatorium cannabinum
  - 117 No. Myosotis scorpioides
  - 91 No. Ranunculus penicillatus
  - 91 No. Nasturtium officinale
  - 91 No. Callitriche stagnalis
  - 91 No. Sparganium erectum
  - 91 No. Berula erecta
  - 91 No. Ranunculus peltatus

- PROPOSED NATIVE PLANT MIX:**
- 35 No. Cornus sanguinea
  - 35 No. Corylus avellana
  - 35 No. Crataegus monogyna
  - 35 No. Euonymus europaeus
  - 35 No. Ilex aquifolium
  - 35 No. Ligustrum vulgare
  - 35 No. Prunus spinosa
  - 35 No. Rosa canina
  - 35 No. Salix cinerea
  - 35 No. Viburnum opulus

- PROPOSED NATIVE PLANT MIX:**
- 10 No. Cornus sanguinea
  - 10 No. Corylus avellana
  - 10 No. Crataegus monogyna
  - 10 No. Euonymus europaeus
  - 10 No. Ilex aquifolium
  - 10 No. Ligustrum vulgare
  - 10 No. Prunus spinosa
  - 10 No. Rosa canina
  - 10 No. Salix cinerea
  - 10 No. Viburnum opulus

- PROPOSED NATIVE BUFFER PLANTING Type A:**
- 22 No. Clematis cirrhosa 'Jingle Bells'
  - 22 No. Jasminum officinale

- PROPOSED NATIVE BUFFER PLANTING Type A:**
- 87 No. Acer campestre
  - 173 No. Crataegus monogyna
  - 87 No. Ilex aquifolium
  - 145 No. Prunus spinosa
  - 87 No. Salix caprea

- PROPOSED NATIVE BUFFER PLANTING Type A:**
- 224 No. Acer campestre
  - 447 No. Crataegus monogyna
  - 224 No. Ilex aquifolium
  - 373 No. Prunus spinosa
  - 224 No. Salix caprea

- PROPOSED NATIVE PLANT MIX:**
- 133 No. Cornus sanguinea
  - 133 No. Corylus avellana
  - 133 No. Crataegus monogyna
  - 133 No. Euonymus europaeus
  - 133 No. Ilex aquifolium
  - 133 No. Ligustrum vulgare
  - 133 No. Prunus spinosa
  - 133 No. Rosa canina
  - 133 No. Salix cinerea
  - 133 No. Viburnum opulus

- PROPOSED NATIVE PLANT MIX:**
- 19 No. Cornus sanguinea
  - 19 No. Corylus avellana
  - 19 No. Crataegus monogyna
  - 19 No. Euonymus europaeus
  - 19 No. Ilex aquifolium
  - 19 No. Ligustrum vulgare
  - 19 No. Prunus spinosa
  - 19 No. Rosa canina
  - 19 No. Salix cinerea
  - 19 No. Viburnum opulus

**PLANTING SCHEDULE FOR DRAWING NO 4012**

| Number | Species               | Specification                            | Pot Size | Density | Height     |
|--------|-----------------------|------------------------------------------|----------|---------|------------|
| 1 No.  | Amelanchier lamarckii | Standard Multi-Stemmed :3/5 brks :3x :RB |          | Counted | 3.0 - 3.5m |
| 1 No.  | Fagus sylvatica       | Semi-Mature :Clear Stem min. 200 :4x :BR |          | Counted | 4.0 - 4.5m |
| 2 No.  | Pinus sylvestris      | Semi-Mature :Clear Stem min. 200 :4x :BR |          | Counted | 4.0 - 4.5m |
| 1 No.  | Quercus robur         | Semi-Mature :Clear Stem min. 200 :4x :BR |          | Counted | 4.0 - 4.5m |
| 1 No.  | Taxus baccata         | Semi-Mature :Clear Stem min. 200 :4x :BR |          | Counted | 4.0 - 4.5m |

**PROPOSED NATIVE BUFFER PLANTING Type A:**

| Number  | Species            | Specification | Pot Size         | Density   | Height |
|---------|--------------------|---------------|------------------|-----------|--------|
| 329 No. | Acer campestre     | BR            | 4/m <sup>2</sup> | 100-125cm |        |
| 656 No. | Crataegus monogyna | BR            | 4/m <sup>2</sup> | 60-80cm   |        |
| 329 No. | Ilex aquifolium    | 3L            | 4/m <sup>2</sup> | 30-40cm   |        |
| 548 No. | Prunus spinosa     | BR            | 4/m <sup>2</sup> | 60-80cm   |        |
| 329 No. | Salix caprea       | BR            | 4/m <sup>2</sup> | 80-100cm  |        |

**PROPOSED NATIVE BUFFER PLANTING Type B:**

| Number  | Species            | Specification | Pot Size         | Density   | Height |
|---------|--------------------|---------------|------------------|-----------|--------|
| 95 No.  | Acer campestre     | BR            | 4/m <sup>2</sup> | 100-125cm |        |
| 95 No.  | Corylus avellana   | BR            | 4/m <sup>2</sup> | 60-80cm   |        |
| 188 No. | Crataegus monogyna | BR            | 4/m <sup>2</sup> | 60-80cm   |        |
| 156 No. | Prunus spinosa     | BR            | 4/m <sup>2</sup> | 60-80cm   |        |
| 95 No.  | Rosa arvensis      | BR            | 4/m <sup>2</sup> | 60-80cm   |        |

**PROPOSED NATIVE PLANT MIX:**

| Number  | Species            | Common Name         | Specification | Pot Size         | Density | Height |
|---------|--------------------|---------------------|---------------|------------------|---------|--------|
| 229 No. | Cornus sanguinea   | Common Dogwood      | BR            | 4/m <sup>2</sup> | 60-80cm |        |
| 229 No. | Corylus avellana   | Common Hazel        | BR            | 4/m <sup>2</sup> | 60-80cm |        |
| 229 No. | Crataegus monogyna | Singleseed hawthorn | BR            | 4/m <sup>2</sup> | 60-80cm |        |
| 229 No. | Euonymus europaeus | Common Spindle Tree | BR            | 4/m <sup>2</sup> | 60-80cm |        |
| 229 No. | Ilex aquifolium    | English holly       | 3L            | 4/m <sup>2</sup> | 30-40cm |        |
| 229 No. | Ligustrum vulgare  | Common Privet       | BR            | 4/m <sup>2</sup> | 60-80cm |        |
| 229 No. | Prunus spinosa     | Blackthorn          | BR            | 4/m <sup>2</sup> | 60-80cm |        |
| 229 No. | Rosa canina        | Dog Rose            | BR            | 4/m <sup>2</sup> | 40-60cm |        |
| 229 No. | Salix cinerea      | Grey Willow         | BR            | 4/m <sup>2</sup> | 40-60cm |        |
| 229 No. | Viburnum opulus    | Gelder Rose         | BR            | 4/m <sup>2</sup> | 40-60cm |        |

**AQUATIC PLANTING:**

| Number  | Abbreviation | Species                 | Density          |
|---------|--------------|-------------------------|------------------|
| 407 No. | LYTSA        | Lythrum salicaria       | 7/m <sup>2</sup> |
| 373 No. | EUT CAN      | Eupatorium cannabinum   | 7/m <sup>2</sup> |
| 480 No. | MYOSC        | Myosotis scorpioides    | 9/m <sup>2</sup> |
| 373 No. | Rpe          | Ranunculus penicillatus | 7/m <sup>2</sup> |
| 373 No. | No           | Nasturtium officinale   | 7/m <sup>2</sup> |
| 373 No. | Cs           | Callitriche stagnalis   | 7/m <sup>2</sup> |
| 373 No. | Se           | Sparganium erectum      | 7/m <sup>2</sup> |
| 373 No. | Be           | Berula erecta           | 7/m <sup>2</sup> |
| 373 No. | RPe          | Ranunculus peltatus     | 7/m <sup>2</sup> |

**Climbers:**

| Number | Abbreviation | Species                          | Pot Size | Density |
|--------|--------------|----------------------------------|----------|---------|
| 50 No. | CcJB         | Clematis cirrhosa 'Jingle Bells' | 3L       | 2/m     |
| 50 No. | JAOF         | Jasminum officinale              | 3L       | 2/m     |