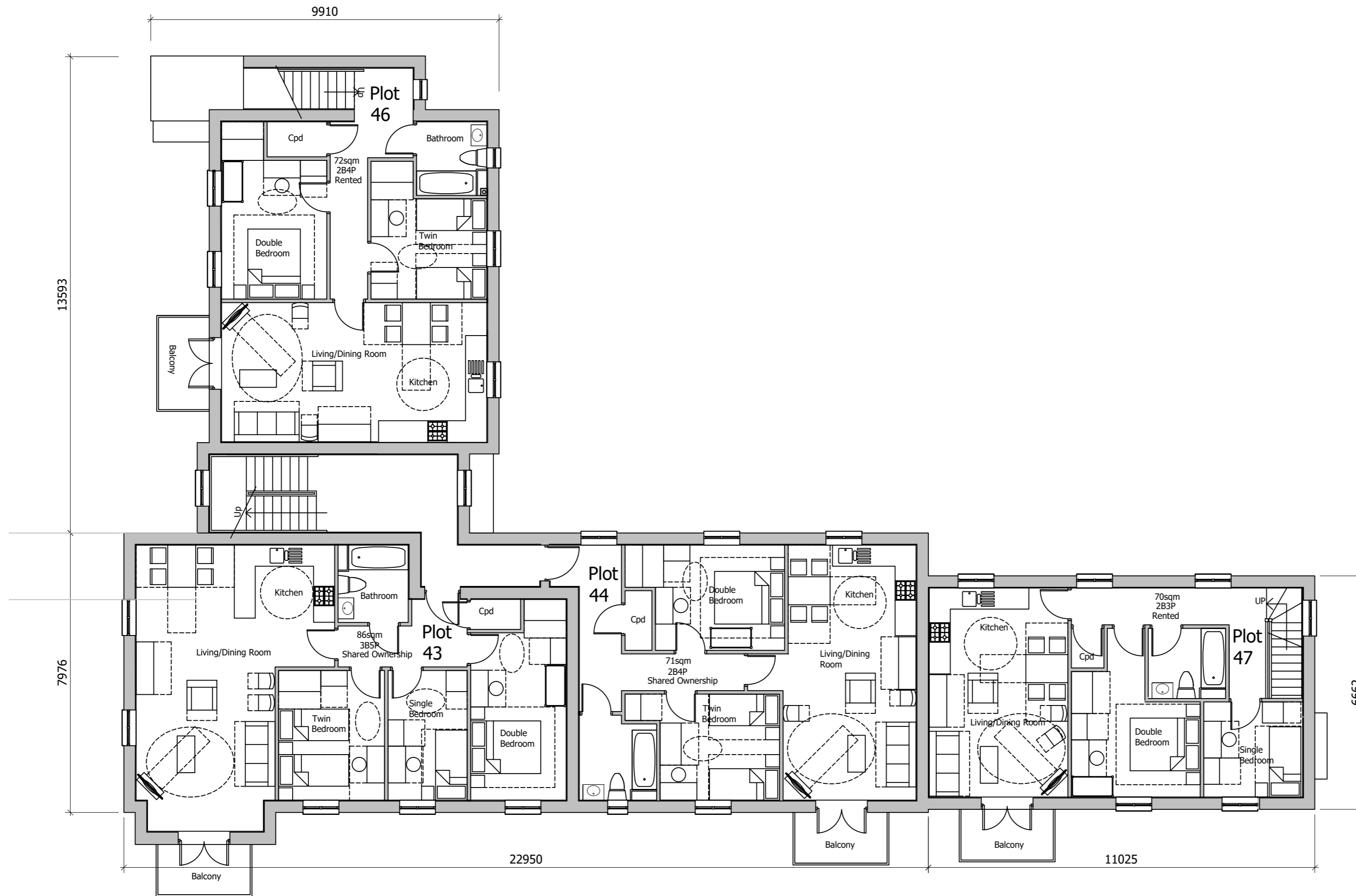


The scaling of this drawing cannot be assured

Revision	Date	Drn	Ckd
-	30.08.19	EM	CB
P1	28.02.20	ROR	ST
Revisions undertaken to LPA consultation responses and feedback			
P2	08.06.20	ROR	PN
Juliet balconies removed			



## PLANNING

Project  
**LAND AT TEVERSHAM ROAD  
 FULBOURN**

Drawing Title  
**APARTMENT BLOCK B  
 FIRST FLOOR**

Date	Scale	Drawn by	Check by
15.07.19	1:100@A2	EM	SB
Project No	Drawing No	Revision	
28815	28815-P11-101	P2	

**BARTON  
 WILLMORE**

Town Planning • Master Planning & Urban Design • Architecture •  
 Landscape Planning & Design • Infrastructure & Environmental  
 Planning • Heritage • Graphic Communication •  
 Communications & Engagement • Development Economics

bartonwillmore.co.uk



Offices at Birmingham Bristol Cambridge Cardiff Ebbw Vale Edinburgh  
 Glasgow Leeds London Manchester Newcastle Reading Southampton

