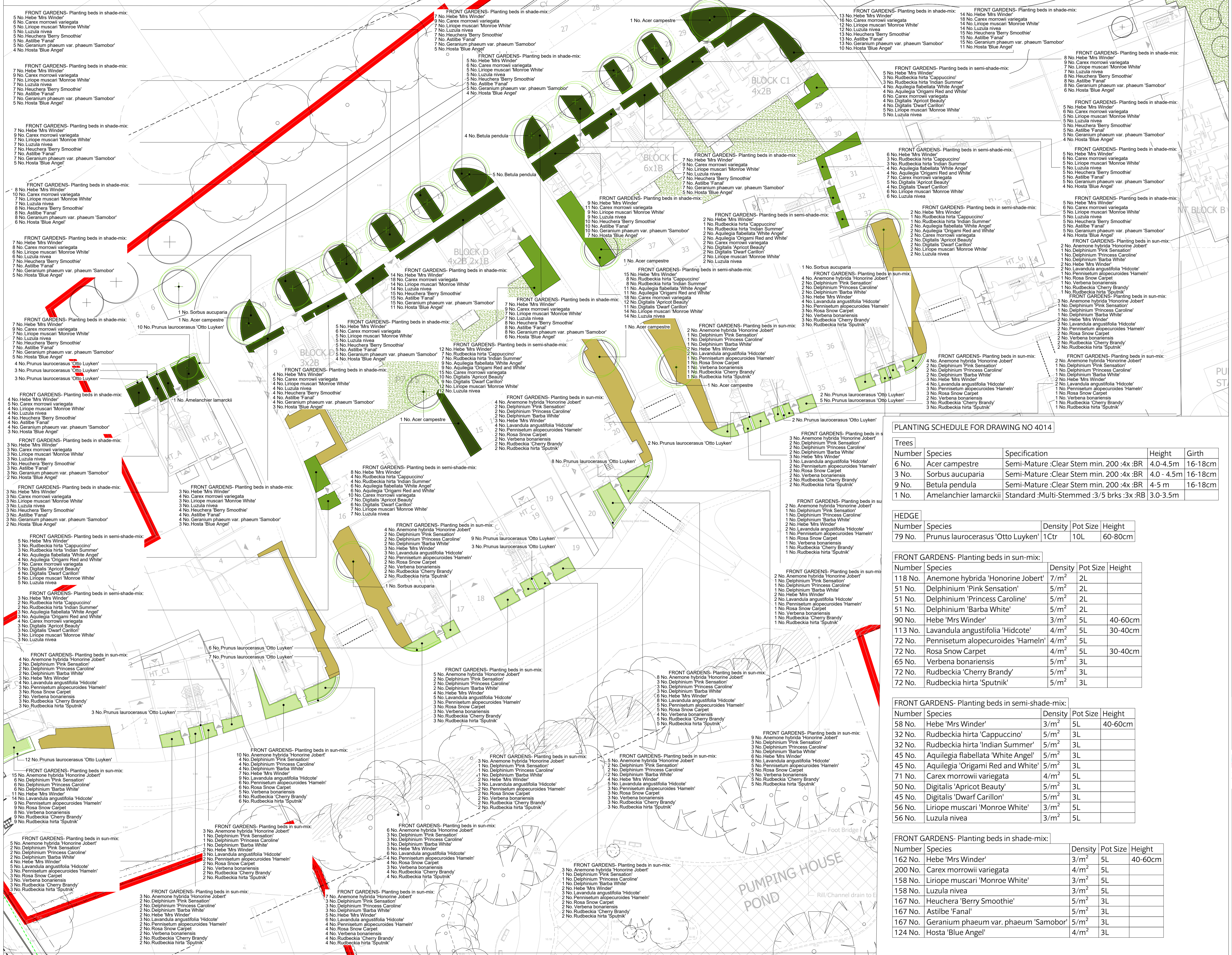
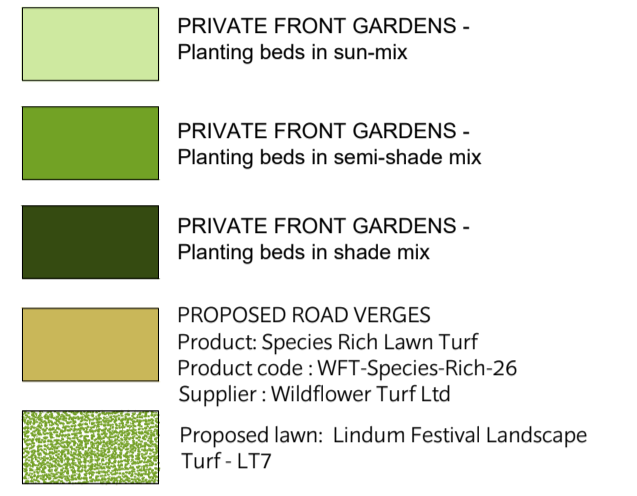
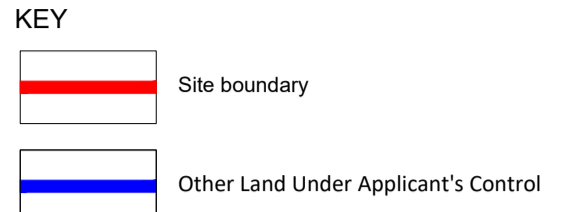


This document should not be relied on or used in circumstances other than those for which it was prepared and for which Chris Blandford Associates was commissioned. Chris Blandford Associates accepts no responsibility for this document to any other party other than the person by whom it was commissioned.



PLANTING SCHEDULE FOR DRAWING NO 414

| Number | Species               | Specification                             | Height     | Girth   |
|--------|-----------------------|---|------------|---------|
| 6 No.  | Acer campestre        | Semi-Mature :Clear Stem min. 200 :4x :BR  | 4.0-4.5m   | 16-18cm |
| 3 No.  | Sorbus aucuparia      | Semi-Mature :Clear Stem min. 200 :4x :BR  | 4.0 - 4.5m | 16-18cm |
| 9 No.  | Betula pendula        | Semi-Mature :Clear Stem min. 200 :4x :BR  | 4-5 m      | 16-18cm |
| 1 No.  | Amelanchier lamarckii | Standard :Multi-Stemmed :3/5 brks :3x :RB | 3.0-3.5m   |         |

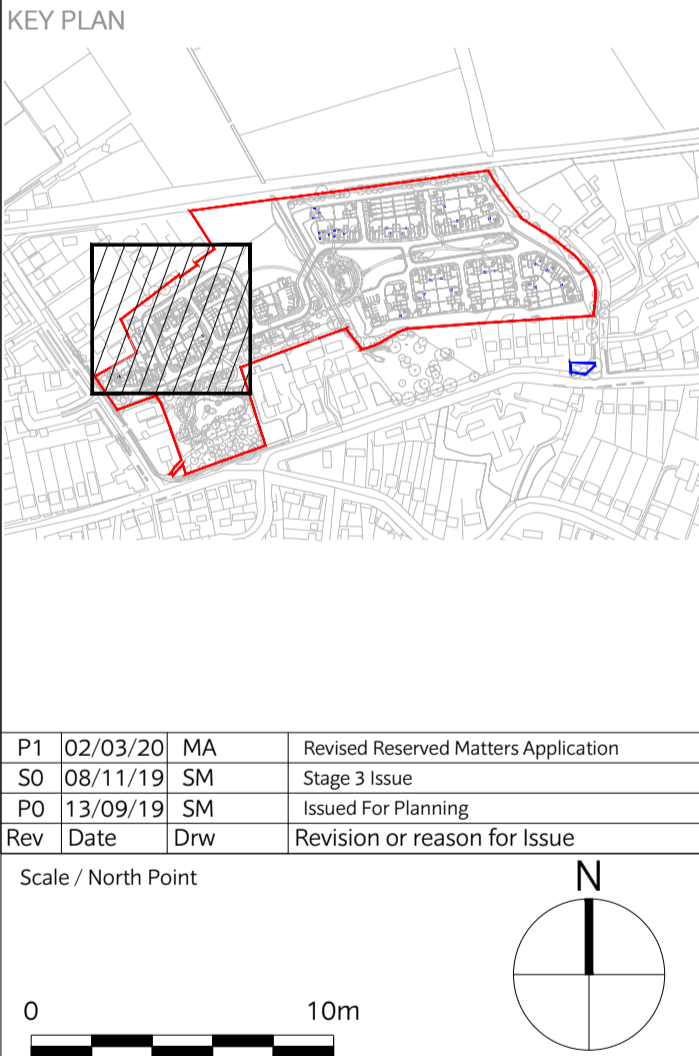
| Number | Species                           | Density | Pot Size | Height  |
|--------|-----------------------------------|---------|----------|---------|
| 79 No. | Prunus laurocerasus 'Otto Luyken' | 1Ctr    | 10L      | 60-80cm |

| Number  | Species                          | Density          | Pot Size | Height  |
|---------|----------------------------------|------------------|----------|---------|
| 118 No. | Anemone hybrida 'Honore Jobert'  | 7/m <sup>2</sup> | 2L       |         |
| 51 No.  | Delphinium 'Pink Sensation'      | 5/m <sup>2</sup> | 2L       |         |
| 51 No.  | Delphinium 'Princess Caroline'   | 5/m <sup>2</sup> | 2L       |         |
| 51 No.  | Delphinium 'Barba White'         | 5/m <sup>2</sup> | 2L       |         |
| 90 No.  | Hebe 'Mrs Winder'                | 3/m <sup>2</sup> | 5L       | 40-60cm |
| 113 No. | Lavandula angustifolia 'Hidcote' | 4/m <sup>2</sup> | 5L       | 30-40cm |
| 72 No.  | Pennisetum alopecuroides 'Hamel' | 4/m <sup>2</sup> | 5L       |         |
| 72 No.  | Rosa Snow Carpet                 | 4/m <sup>2</sup> | 5L       | 30-40cm |
| 65 No.  | Verbena bonariensis              | 5/m <sup>2</sup> | 3L       |         |
| 72 No.  | Rudbeckia 'Cherry Brandy'        | 5/m <sup>2</sup> | 3L       |         |
| 72 No.  | Rudbeckia hirta 'Sputnik'        | 5/m <sup>2</sup> | 3L       |         |

| Number | Species                            | Density          | Pot Size | Height  |
|--------|------------------------------------|------------------|----------|---------|
| 58 No. | Hebe 'Mrs Winder'                  | 3/m <sup>2</sup> | 5L       | 40-60cm |
| 32 No. | Rudbeckia hirta 'Cappuccino'       | 5/m <sup>2</sup> | 3L       |         |
| 32 No. | Rudbeckia hirta 'Indian Summer'    | 5/m <sup>2</sup> | 3L       |         |
| 45 No. | Aquilegia flabellata 'White Angel' | 5/m <sup>2</sup> | 3L       |         |
| 45 No. | Aquilegia 'Origami Red and White'  | 5/m <sup>2</sup> | 3L       |         |
| 71 No. | Carex morrowii variegata           | 4/m <sup>2</sup> | 2L       |         |
| 50 No. | Digitalis 'Apricot Beauty'         | 5/m <sup>2</sup> | 3L       |         |
| 45 No. | Digitalis 'Dwarf Carillon'         | 5/m <sup>2</sup> | 3L       |         |
| 56 No. | Liriope muscari 'Monroe White'     | 3/m <sup>2</sup> | 5L       |         |
| 56 No. | Luzula nivea                       | 3/m <sup>2</sup> | 5L       |         |

| Number  | Species                               | Density          | Pot Size | Height  |
|---------|---------------------------------------|------------------|----------|---------|
| 162 No. | Hebe 'Mrs Winder'                     | 3/m <sup>2</sup> | 5L       | 40-60cm |
| 200 No. | Carex morrowii variegata              | 4/m <sup>2</sup> | 5L       |         |
| 158 No. | Liriope muscari 'Monroe White'        | 3/m <sup>2</sup> | 5L       |         |
| 158 No. | Luzula nivea                          | 3/m <sup>2</sup> | 5L       |         |
| 167 No. | Heuchera 'Berry Smoothie'             | 5/m <sup>2</sup> | 3L       |         |
| 167 No. | Astilbe 'Fanal'                       | 5/m <sup>2</sup> | 3L       |         |
| 167 No. | Geranium phaeum var. phaeum 'Samobor' | 5/m <sup>2</sup> | 3L       |         |
| 124 No. | Hosta 'Blue Angel'                    | 4/m <sup>2</sup> | 3L       |         |

NOTE:  
 - For informal play & LEAP planting plans refer to drawing TRF-CBA-1-GF-M2-L-4017  
 - For overall planting schedule refer to drawing TRF-CBA-1-GF-M2-L-4011



CHRIS BLANDFORD ASSOCIATES  
 landscape | environment | heritage

The Print Rooms Studio Unit 11 164/180 Union St Waterloo London SE1 0LH  
 T +44 (0)20 7089 6480 E mail@cbstudios.com W www.cbstudios.com

Client  
 Castlefield International Limited

Project Title  
 TEVERSHAM ROAD FULBOURN

Drawing Series and Title  
 4000 SERIES  
 Planting Plan Sheet 3 of 6

Scale @ A1  
 1:250  
 Drawn  
 SM  
 Date  
 SEP 2019  
 Approved  
 AS  
 FOR DRAWING  
 P1